

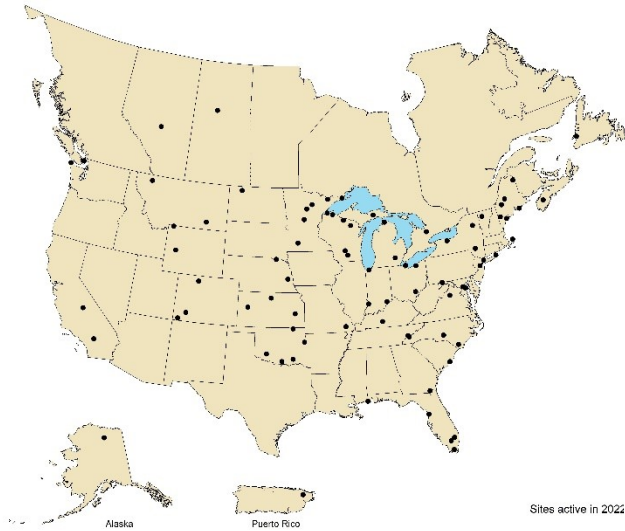


National Atmospheric Deposition Program

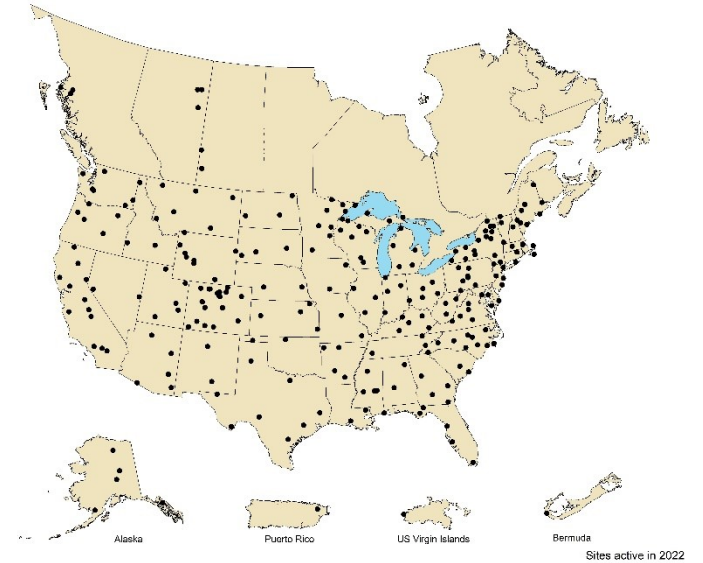
2024 Calendar

Network Maps

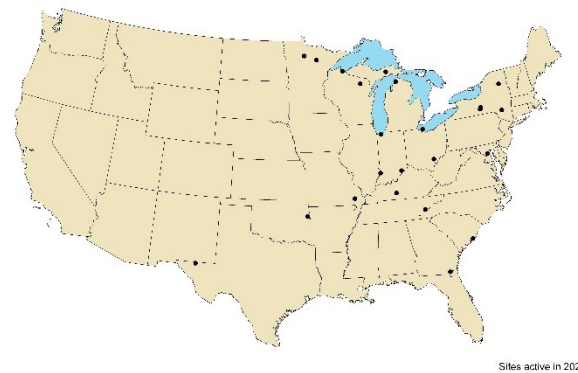
Mercury Deposition Network (MDN)



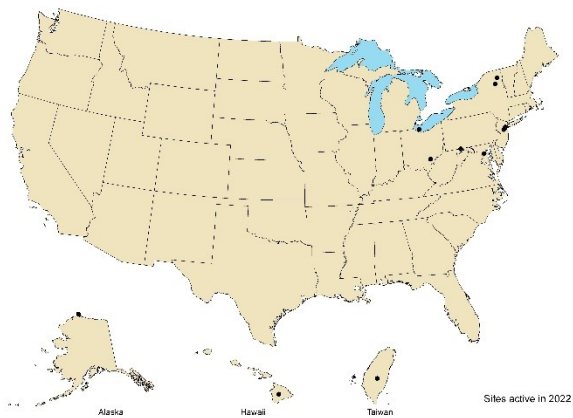
National Trends Network (NTN)



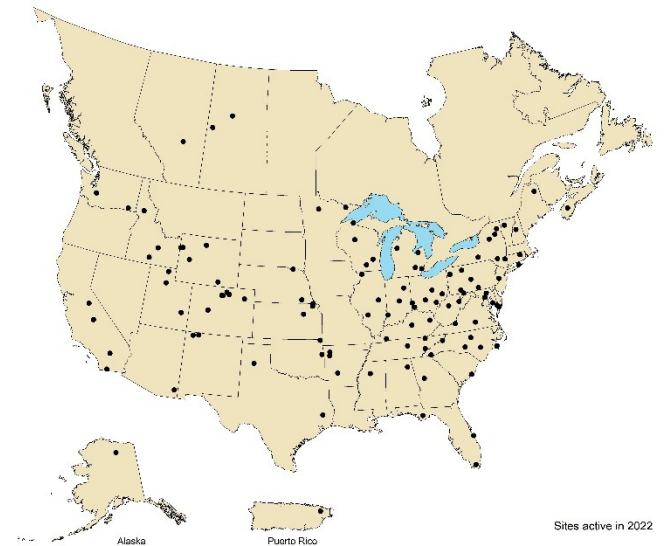
Mercury Litterfall Network (MLN)



Atmospheric Mercury Network (AMNet)

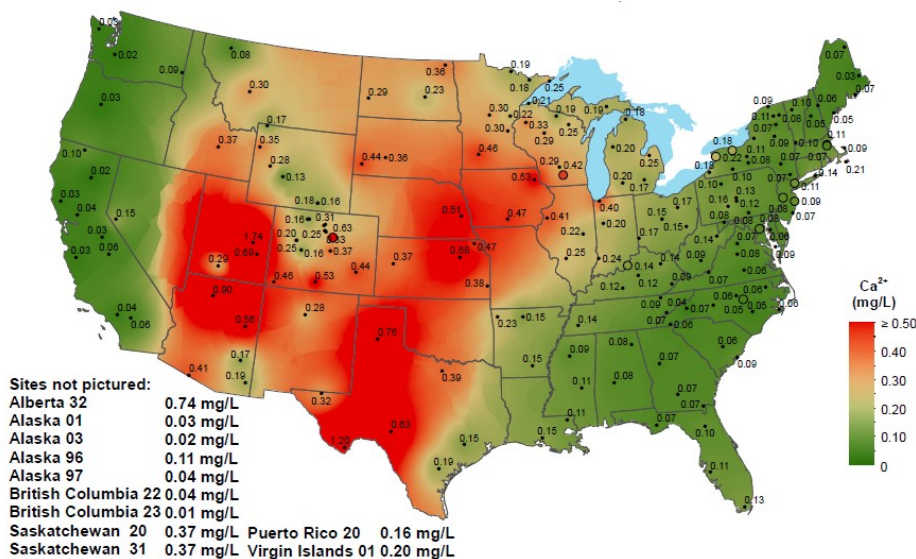


Ammonia Monitoring Network (AMoN)

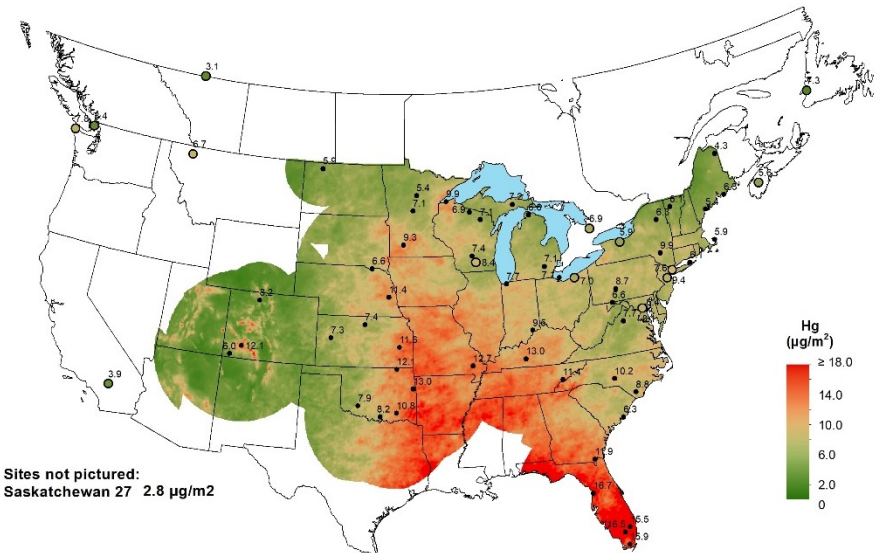


NADP Summary

The National Atmospheric Deposition Program (NADP) is a National Research Support Program of the State Agricultural Experiment Stations (NRSP-3), housed at the Wisconsin State Laboratory of Hygiene at the University of Wisconsin-Madison, and is based on collaborative efforts between many different groups interested in atmospheric deposition of pollutants and their effects on different environments. It is structured as a cooperative program that represents coordinated efforts of many individuals in federal, state, tribal and local governmental agencies, educational institutions, private companies, and non-governmental agencies to operate monitoring sites and report data. The NADP provides free and easy access to all of its precipitation data, including seasonal and annual averages, trend plots, deposition maps, reports, manuals, and educational brochures. The annual map summary is the principal product of the NADP. It summarizes the results of network operation for the most recent complete calendar year in graphic form. Examples from the 2022 annual summary are shown below. Copies of the 2022 Annual Summary are available from the Program Office, requests can be made to nadp@slh.wisc.edu.



2022 Calcium concentration



2022 Total Mercury Wet Deposition

The NADP is located at the Wisconsin State Laboratory of Hygiene, a unit of the University of Wisconsin-Madison. For more information, contact: NADP Program Office, Wisconsin State Laboratory of Hygiene, 465 Henry Mall, Madison, Wisconsin 53706; E-mail: nadp@slh.wisc.edu; or visit <http://nadp.slh.wisc.edu>.



Notes from the Chair

As a “plant guy”, one of my favorite parts of the NADP calendar is looking in the backgrounds to see what vegetation communities exist at a site. My introduction to NADP came in 2004 in the lava fields of Craters of the Moon National Monument where I assisted in collecting data from ID03. Coming from southern California I was familiar with air pollution, but didn’t expect it to be an issue in the remote blue skies of Idaho. The next year, I became the site operator at CA67 at Joshua Tree National Park where I learned that air pollution from Los Angeles was not only blowing into the desert, but also causing shifts in the plant communities within the park. It’s now been 20 years since I collected that first bucket and have dedicated my career to understanding the relationship between atmospheric deposition and ecosystem response.



Since joining the NPS Air Resources Division almost 9 years ago, I have had the opportunity to visit many more NADP sites and explore the impacts to plants, soils, waters, and the creatures within. With the growing threat of climate change, emerging pollutants, such as microplastics and PFAS, and the shifts in nitrogen emission towards agricultural sources, the NADP monitoring networks have never been more important to help protect our local ecosystems. The long-term data that we collect, analyze, and distribute is crucial to identifying how precipitation patterns are shifting across the country and how this changes what and how much we collect in our samplers. Additionally, each site—whether clean/dirty or sensitive/resilient—contributes to our maps and models that are helping us fortify the networks under the strain of budget cuts and new pollution sources. While the world changes around us, I am forever grateful to the site operators who stay consistent and are out in the field every Tuesday collecting bags and making the rest of our work possible. Not a day goes by that I use NADP data that I don’t think of my drive out to Blackrock and the surrounding ecosystem that my little bucket helped protect. Thank you all for the work you do to support NADP and your contribution to cleaning our air.

Michael D. Bell, National Park Service
Chair of the Executive Committee



NADP Analytical Laboratory (NAL) and Program Office (PO) Henry Mall

Front row:

Cami Ritonia, Maya Giordano, Jehona Zeneli, Anita Peterson, Dana Grabowski, Ella Wickstrom, Fiona O'Connell, Jason Worden

Second row:

Amy Mager, Mike Randall, Richard Tanabe, Zac Najacht, Mark Kuether, Jaden Anderson, Martin Shafer, David Gay

NADP Analytical Laboratory (NAL) Ag Drive

Front row:

Chris Lepley, Nichole Miller, Katie Blaydes, Kat McKinnon

Second row:

Chris Bauknecht, Kirsten Widmayer, Abby Carr, Christa Dahman





*Buffalo Pass – Summit Lake – C097 (NTN/MDN)
Photo credit: C. Stellick, USDA-FS*

January 2024

SUNDAY	MONDAY	TUESDAY	WEDNESDAY	THURSDAY	FRIDAY	SATURDAY
Site Support: 1-800-952-7353	1 New Year's Day (NADP Closed)	2 NTN change-out MDN change-out AMoN change-out	3	4	5	6
7	8	9 NTN change-out MDN change-out	10	11	12	13
14	15 Martin Luther King Jr Day (NADP Closed)	16 NTN change-out MDN change-out AMoN change-out	17	18	19	20
21	22	23 NTN change-out MDN change-out	24	25	26	27
28	29	30 NTN change-out MDN change-out AMoN change-out	31	Did you know: The NADP Executive Committee approved the rebranding of the Central Analytical Laboratory (CAL) and the Mercury Analytical Laboratory (HAL) as the NADP Analytical Laboratory (NAL).		



*Smith Valley - NV03 (NTN)
Photo credit: EEMS Inc.*

February 2024

SUNDAY	MONDAY	TUESDAY	WEDNESDAY	THURSDAY	FRIDAY	SATURDAY
<p>Did you know: The Critical Loads of Atmospheric Deposition (CLAD) committee was NADP's first science committee. The mission of CLAD is to facilitate the exchange, use, and evolution of critical loads science, technical information, and modeling and mapping methods within a broad multi organization context that includes federal, state, tribal, and local agencies as well as academia, industry, and non-profit organizations. For more info visit https://nadp.slh.wisc.edu/committees/clad/</p>				1	2	3
4	5	6 NTN change-out MDN change-out	7	8	9	10
11	12	13 NTN change-out MDN change-out AMoN change-out	14 Valentine's Day	15	16	17
18	19 President's Day	20 NTN change-out MDN change-out	21	22	23	24
25	26	27 NTN change-out MDN change-out AMoN change-out	28	29	<p>Site Support: 1-800-952-7353</p> <p>Precipitation Data Submission: nadp-precip@slh.wisc.edu View Precipitation Data: http://nadp.slh.wisc.edu/precip</p>	



*South Pass City - WY97 (NTN)
Photo credit: G. Gerber*

March 2024

SUNDAY	MONDAY	TUESDAY	WEDNESDAY	THURSDAY	FRIDAY	SATURDAY
<p>Did you know: In the past 5 years, there has been an average of 215 publications a year that used NADP data, made comparisons to NADP data, or resulted from NRSP-3 activities over that time period. A publically available listing of all citations using NADP data is accessible at: https://nadp.slh.wisc.edu/pubs/nadp-bibliography/</p>					1	2
3	4	5 NTN change-out MDN change-out	6	7	8	9
10 Daylight Saving Time Starts	11	12 NTN change-out MDN change-out AMoN change-out	13	14	15	16
17 St. Patrick's Day	18	19 First Day of Spring NTN change-out MDN change-out	20	21	22	23
24 Easter	25	26 NTN change-out MDN change-out AMoN change-out	27	28	29 Good Friday	30
31						



*UW Arboretum
Photo credit: R. Tanabe*



Photo credit: C. Sue

NADP Spring Meeting: April 29 – May 3, 2024, Madison, WI
<https://nadp.slh.wisc.edu/spring2024/>



*Picnic Point
Photo credit: K. Morris*



Photo credit: R. Tanabe

April 2024

SUNDAY	MONDAY	TUESDAY	WEDNESDAY	THURSDAY	FRIDAY	SATURDAY
Site Support: 1-800-952-7353	1	2 NTN change-out MDN change-out	3	4	5	6
7	8	9 NTN change-out MDN change-out AMoN change-out	10	11	12	13
14	15	16 NTN change-out MDN change-out	17	18	19	20
21	22 Earth Day	23 NTN change-out MDN change-out AMoN change-out	24	25	26	27
28	29	30 NTN change-out MDN change-out	Did you know: The NADP meets twice a year in the spring and fall. The Spring Meeting is when the technical subcommittees (EOS and NOS), the Science Committees (CLAD, TDep, AMSC, and MELD), and the advisory groups (QAAG and DMAG) come together to advance the mission of NADP. For more information on NADP acronyms: https://nadp.slh.wisc.edu/committees/			



*Wapasu - AB36 (NTN)
Photo credit: EEMS Inc.*

May 2024

SUNDAY	MONDAY	TUESDAY	WEDNESDAY	THURSDAY	FRIDAY	SATURDAY
Site Support: 1-800-952-7353 Precipitation Data Submission: nadp-precip@slh.wisc.edu View Precipitation Data: http://nadp.slh.wisc.edu/precip			1	2	3	4
5	6	7 NTN change-out MDN change-out AMoN change-out	8	9	10	11
12 Mother's Day	13	14 NTN change-out MDN change-out	15	16	17	18
19	20	21 NTN change-out MDN change-out AMoN change-out	22	23	24	25
26	27 Memorial Day (NADP Closed)	28 NTN change-out MDN change-out	29	30	31	



*Sand Mountain Research & Extension Center - AL99 (NTN/AMoN)
Photo credit: EEMS Inc.*

June 2024

SUNDAY	MONDAY	TUESDAY	WEDNESDAY	THURSDAY	FRIDAY	SATURDAY
<p>Did you know: The Total Deposition (TDep) science committee started in 2011. The mission of TDep is to improve estimates of atmospheric deposition by advancing the science of measuring and modeling atmospheric wet, dry, and total deposition of species such as sulfur, nitrogen and mercury. TDep provides a forum for the exchange of information on current and emerging issues within a broad multi-organization context including, atmospheric scientists, ecosystem scientists, resource managers, and policy makers. For more info visit https://nadp.slh.wisc.edu/committees/tdep/</p>						1
2	3	4 NTN change-out MDN change-out AMoN change-out	5	6	7	8
9	10	11 NTN change-out MDN change-out	12	13	14 Flag Day	15
16 Father's Day	17	18 NTN change-out MDN change-out AMoN change-out	19 Juneteenth	20 First Day of Summer	21	22
23 30	24	25 NTN change-out MDN change-out	26	27	28	29



*Orchard -CO82 (NTN/AMoN)
Photo credit: EEMS Inc.*

July 2024

SUNDAY	MONDAY	TUESDAY	WEDNESDAY	THURSDAY	FRIDAY	SATURDAY
	1 Canada Day	2 NTN change-out MDN change-out AMoN change-out	3	4 Independence Day (NADP Closed)	5	6
7	8	9 NTN change-out MDN change-out	10	11	12	13
14	15	16 NTN change-out MDN change-out AMoN change-out	17	18	19	20
21	22	23 NTN change-out MDN change-out	24	25	26	27
28	29	30 NTN change-out MDN change-out AMoN change-out	31	Site Support: 1-800-952-7353 Precipitation Data Submission: nadp-precip@slh.wisc.edu View Precipitation Data: http://nadp.slh.wisc.edu/precip		



*Iberia Research Station - LA12 (NTN)
Photo credit: EEMS Inc.*

August 2024

SUNDAY	MONDAY	TUESDAY	WEDNESDAY	THURSDAY	FRIDAY	SATURDAY
<p>Did you know: The Aeroallergen Monitoring Science Committee (AMSC) started in 2017. The AMSC mission is to engage multi-disciplinary stakeholders in advancing the science of aeroallergen monitoring, including identifying emerging technologies, evaluating methods to ensure data quality, coordination of monitoring stations, and possibly serving as a repository of long-term aeroallergen monitoring data. For more info visit https://nadp.slh.wisc.edu/committees/amsc/</p>				1	2	3
4	5	6 NTN change-out MDN change-out	7	8	9	10
11	12	13 NTN change-out MDN change-out AMoN change-out	14	15	16	17
18	19	20 NTN change-out MDN change-out	21	22	23	24
25	26	27 NTN change-out MDN change-out AMoN change-out	28	29	30	31



*Lake Murray - OK04 (MDN)
Photo credit: EEMS Inc.*

September 2024

SUNDAY	MONDAY	TUESDAY	WEDNESDAY	THURSDAY	FRIDAY	SATURDAY
1	2 Labor Day (NADP Closed)	3 NTN change-out MDN change-out	4	5	6	7
8	9	10 NTN change-out MDN change-out AMoN change-out	11	12	13	14
15	16	17 NTN change-out MDN change-out	18	19	20	21
22 First Day of Autumn	23	24 NTN change-out MDN change-out AMoN change-out	25	26	27	28
29	30	<p>Did you know: The mission of the Mercury in the Environment and Links to Deposition (MELD) Science Committee is to improve our understanding of atmospherically-derived mercury sources, pathways, processes, and effects on the environment. MELD provides an ongoing forum for technical exchange of information on current and emerging issues relevant to atmospheric mercury deposition research and monitoring efforts within a broad multi-organization context including international, federal, state, and local agencies, as well as academia, industry, and non-profit organizations. MELD started in 2020. For more info visit https://nadp.slh.wisc.edu/committees/meld/</p>				



*Chequamegon Bay - W192 (NTN/MDN)
Photo credit: A. Nyhus, WI DNR*

October 2024

SUNDAY	MONDAY	TUESDAY	WEDNESDAY	THURSDAY	FRIDAY	SATURDAY
		1 NTN change-out MDN change-out	2	3	4	5
6	7	8 NTN change-out MDN change-out AMoN change-out	9	10	11	12
13	14 Indigenous Peoples' Day Columbus Day Thanksgiving (Canada)	15 NTN change-out MDN change-out	16	17	18	19
20	21	22 NTN change-out MDN change-out AMoN change-out	23	24	25	26
27	28	29 NTN change-out MDN change-out	30	31 Halloween	Site Support: 1-800-952-7353 Precipitation Data Submission: nadp-precip@slh.wisc.edu View Precipitation Data: http://nadp.slh.wisc.edu/precip	



***Great Smoky Mountains National Park - Elkmont - TN11 (NTN/MDN/MLN)
2022 Fall Meeting and Scientific Symposium field trip***

November 2024

SUNDAY	MONDAY	TUESDAY	WEDNESDAY	THURSDAY	FRIDAY	SATURDAY
<p>Did you know: The Fall Meeting and Scientific Symposium is intended for scientists, resource managers, educators, students, policymakers, and others interested in atmospheric deposition, air quality, and its effects on aquatic and terrestrial ecosystems. NADP data has been used for decades to understand and solve real-world problems impacting people and the planet, including helping to facilitate cleaner water, healthier air quality, more productive fisheries, informed environmental planning, improved air quality and climate forecasting, and responsible environmental stewardship. For more information: https://nadp.slh.wisc.edu/nadp2024/</p>					1	2
3 Daylight Saving Time Ends	4	5 NTN change-out MDN change-out AMoN change-out	6	7	8	9
10	11 Veterans Day	12 NTN change-out MDN change-out	13	14	15	16
17	18	19 NTN change-out MDN change-out AMoN change-out	20	21	22	23
24	25	26 NTN change-out MDN change-out	27	28 Thanksgiving Day (NADP Closed)	29	30



*Beltsville - MD99 (AMNet/NTN/MDN/MLN/AMoN)
Photo credit: EEMS Inc.*

December 2024

SUNDAY	MONDAY	TUESDAY	WEDNESDAY	THURSDAY	FRIDAY	SATURDAY
1	2	3 NTN change-out MDN change-out AMoN change-out	4	5	6	7
8	9	10 NTN change-out MDN change-out	11	12	13	14
15	16	17 NTN change-out MDN change-out AMoN change-out	18	19	20	21 First Day of Winter
22	23	24 Christmas Eve (NADP Closed) NTN change-out MDN change-out	25 Christmas Day (NADP Closed)	26	27	28
29	30	31 New Year's Eve (NADP Closed) NTN change-out MDN change-out AMoN change-out	Did you know: When a sample change-out day occurs on a holiday or personnel are otherwise unavailable to collect a sample on a Tuesday, the NTN allows the sample to be collected early, or up to 194 hours (8 days and 2 hours) after the sample bucket is deployed and still be a valid sample. If the sample is collected early, the operator should pay particular attention to the time that the subsequent sample is deployed. For MDN and AMoN, samples should be changed on the next available day or on the next Tuesday.			

2025 Calendar

JANUARY

S	M	T	W	T	F	S
			1	2	3	4
5	6	7	8	9	10	11
12	13	14	15	16	17	18
19	20	21	22	23	24	25
26	27	28	29	30	31	

FEBRUARY

S	M	T	W	T	F	S
						1
2	3	4	5	6	7	8
9	10	11	12	13	14	15
16	17	18	19	20	21	22
23	24	25	26	27	28	

MARCH

S	M	T	W	T	F	S
						1
2	3	4	5	6	7	8
9	10	11	12	13	14	15
16	17	18	19	20	21	22
23	24	25	26	27	28	29
30	31					

APRIL

S	M	T	W	T	F	S
		1	2	3	4	5
6	7	8	9	10	11	12
13	14	15	16	17	18	19
20	21	22	23	24	25	26
27	28	29	30			

MAY

S	M	T	W	T	F	S
				1	2	3
4	5	6	7	8	9	10
11	12	13	14	15	16	17
18	19	20	21	22	23	24
25	26	27	28	29	30	31

JUNE

S	M	T	W	T	F	S
1	2	3	4	5	6	7
8	9	10	11	12	13	14
15	16	17	18	19	20	21
22	23	24	25	26	27	28
29	30					

JULY

S	M	T	W	T	F	S
		1	2	3	4	5
6	7	8	9	10	11	12
13	14	15	16	17	18	19
20	21	22	23	24	25	26
27	28	29	30	31		

AUGUST

S	M	T	W	T	F	S
					1	2
3	4	5	6	7	8	9
10	11	12	13	14	15	16
17	18	19	20	21	22	23
24	25	26	27	28	29	30
31						

SEPTEMBER

S	M	T	W	T	F	S
	1	2	3	4	5	6
7	8	9	10	11	12	13
14	15	16	17	18	19	20
21	22	23	24	25	26	27
28	29	30				

OCTOBER

S	M	T	W	T	F	S
			1	2	3	4
5	6	7	8	9	10	11
12	13	14	15	16	17	18
19	20	21	22	23	24	25
26	27	28	29	30	31	

NOVEMBER

S	M	T	W	T	F	S
						1
2	3	4	5	6	7	8
9	10	11	12	13	14	15
16	17	18	19	20	21	22
23	24	25	26	27	28	29
30						

DECEMBER

S	M	T	W	T	F	S
	1	2	3	4	5	6
7	8	9	10	11	12	13
14	15	16	17	18	19	20
21	22	23	24	25	26	27
28	29	30	31			

Contact Information

NADP Program Office (PO)

Jamie Schauer

Principal Investigator
wslhdirector@slh.wisc.edu
608-890-1569

David Gay

Coordinator
Dgay2@wisc.edu
608-263-9162

Richard Tanabe

Site Liaison
Richard.Tanabe@slh.wisc.edu
800-952-7353 (toll-free)

Mark Kuether

Data Engineer
Mark.Kuether@slh.wisc.edu
608-265-4834

Martin Shafer

System Quality Assurance Manager
mshafer@wisc.edu
608-224-3799

NADP Program Office
Wisconsin State Laboratory of Hygiene
465 Henry Mall
Madison, Wisconsin 53706

NADP Analytical Laboratory (NAL)

Amy Mager

NADP Laboratory Director
Amy.Mager@slh.wisc.edu
608-224-6215

Katie Blaydes

Chemist Supervisor
Katie.Blaydes@slh.wisc.edu
608-224-4334

Dana Grabowski

Field and Operations Supervisor
Dana.Grabowski@slh.wisc.edu
608-265-4269

Nichole Miller

NADP Laboratory Quality Assurance Specialist
Nichole.Miller@slh.wisc.edu
608-224-4335

NADP Analytical Laboratory
Wisconsin State Laboratory of Hygiene
2601 Agriculture Drive
Madison, Wisconsin 53718

Christa Dahman

Chemist Supervisor
Christa.Dahman@slh.wisc.edu
608-224-4320

Zac Najacht

Sample and Data Supervisor
Zachary.Najacht@slh.wisc.edu
608-224-6212

NADP Sample and Supply Receiving
Wisconsin State Laboratory of Hygiene
465 Henry Mall
Madison, Wisconsin 53706

Cover Photo: WY97 –South Pass City (NTN)
Photo credit: G. Gerber, USDA-FS



The NADP is located at the Wisconsin State Laboratory of Hygiene, a unit of the University of Wisconsin-Madison. For more information, contact: NADP Program Office, Wisconsin State Laboratory of Hygiene, 465 Henry Mall, University of Wisconsin-Madison, Madison, Wisconsin 53706. E-mail: nadp@slh.wisc.edu, or visit <http://nadp.slh.wisc.edu>.

