

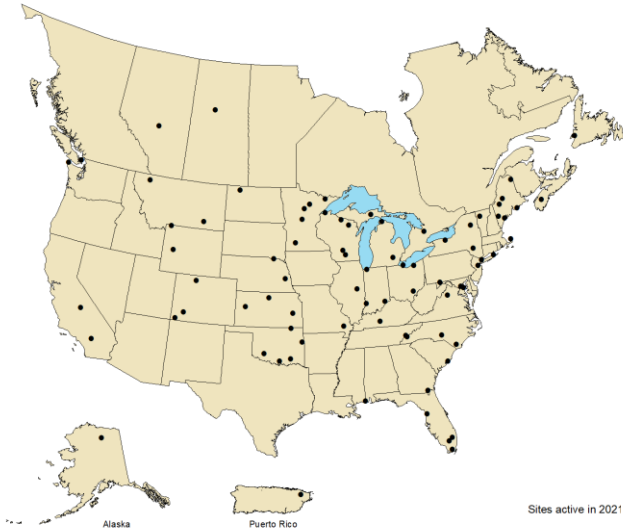


National Atmospheric Deposition Program

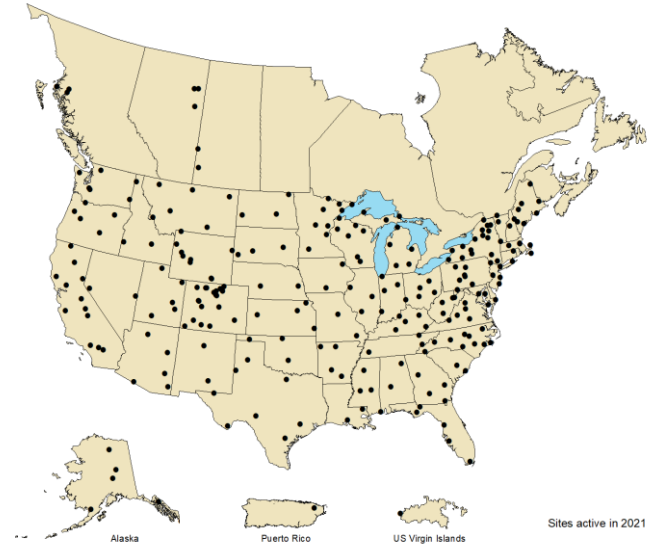
**2023 Calendar**

# Network Maps

Mercury Deposition Network (MDN)



National Trends Network (NTN)



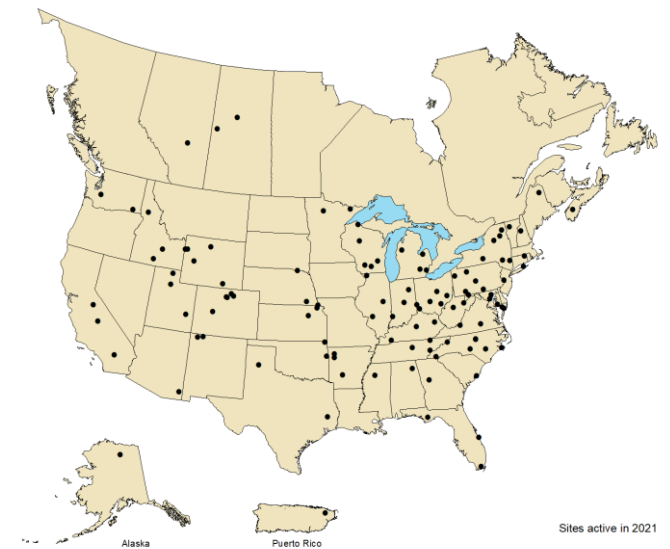
Mercury Litterfall Network (MLN)



Atmospheric Mercury Network (AMNet)

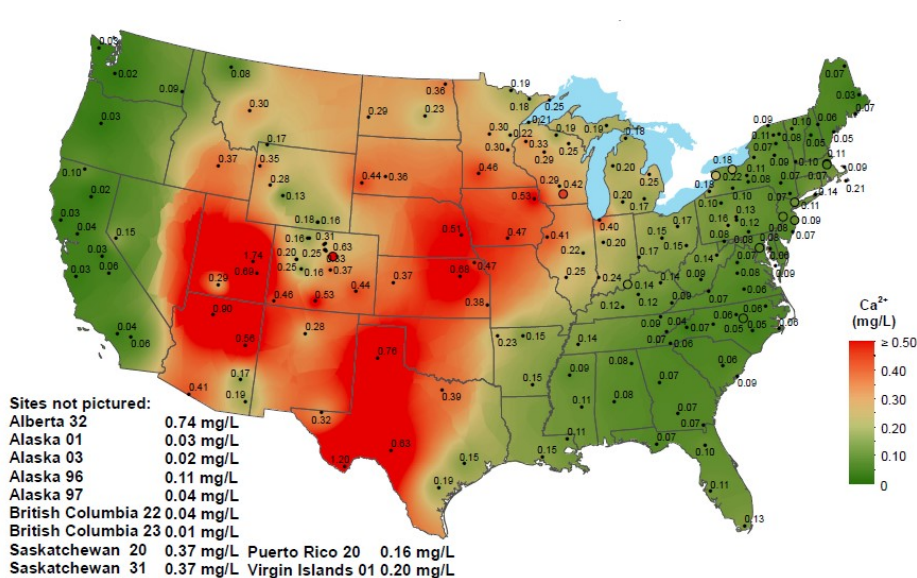


Ammonia Monitoring Network (AMoN)

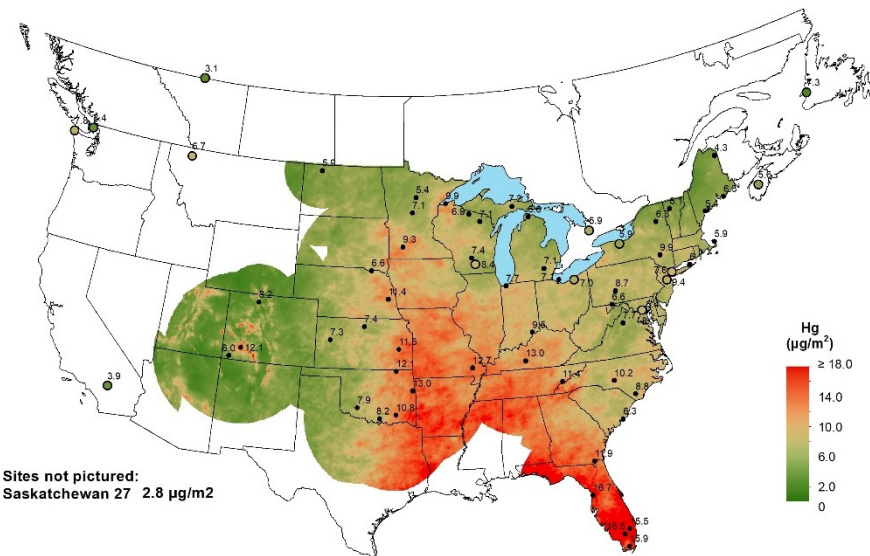


# NADP Summary

The National Atmospheric Deposition Program (NADP) is a National Research Support Program of the State Agricultural Experiment Stations (NRSP-3), housed at the Wisconsin State Laboratory of Hygiene at the University of Wisconsin-Madison, and is based on collaborative efforts between many different groups interested in atmospheric deposition of pollutants and their effects on different environments. It is structured as a cooperative program that represents coordinated efforts of many individuals in federal, state, tribal and local governmental agencies, educational institutions, private companies, and non-governmental agencies to operate monitoring sites and report data. The NADP provides free and easy access to all of its precipitation data, including seasonal and annual averages, trend plots, deposition maps, reports, manuals, and educational brochures. The annual map summary is the principal product of the NADP. It summarizes the results of network operation for the most recent complete calendar year in graphic form. Examples from the 2021 annual summary are shown below. Copies of the 2021 Annual Summary are available from the Program Office, requests can be made to [nadp@slh.wisc.edu](mailto:nadp@slh.wisc.edu).



2021 Calcium concentration



2021 Total Mercury Wet Deposition

The NADP is located at the Wisconsin State Laboratory of Hygiene, a unit of the University of Wisconsin-Madison. For more information, contact: NADP Program Office, Wisconsin State Laboratory of Hygiene, 465 Henry Mall, Madison, Wisconsin 53706; E-mail: [nadp@slh.wisc.edu](mailto:nadp@slh.wisc.edu); or visit <http://nadp.slh.wisc.edu>.



# Notes from the Chair

As we emerge from the COVID-19 pandemic and the challenges it has brought to the National Atmospheric Deposition Program and community, there is much for which we can be thankful. The Program Office, site operators, and Wisconsin State Laboratory of Hygiene continue to keep the networks operating smoothly and to deliver outstanding service. Now in its fifth decade, the Program continues to provide the highest quality data to advance the science of atmospheric chemistry and deposition, track trends in atmospheric deposition, respond to emerging environmental issues, and support decision makers in their efforts to protect human and ecosystem health. Every member of the NADP community, from site operator to committee member to data user, contributes to the success and growth of NADP and your commitment is very much appreciated.

As we look to the future, expanding the NADP National Trends Network, mercury, and ammonia networks, especially to urban areas, will continue to be Program priorities. Recognizing the impact of inflation and thinning budgets for monitoring among participating agencies, the NADP will continue its commitment to financial responsibility by adopting efficiencies and improvements to keep costs affordable to participants. Opportunities for collaboration among NADP and other monitoring programs to enhance network sustainability will be explored. Additionally, NADP will pursue opportunities to venture into new types of measurements, expanding on current monitoring infrastructure and the capabilities of the Wisconsin State Laboratory of Hygiene.

On behalf of the Program, I enthusiastically thank you for your participation in NADP.

Linda H. Geiser, US Forest Service

Chair of the Executive Committee





Front row: Cami Ritonia, Nichole Miller, Kirsten Widmayer, Katie Blaydes, Anita Peterson, Dana Grabowski  
Second row: Richard Tanabe, Christa Dahman, Amy Mager, Kat McKinnon, Abby Carr  
Third row: Wyatt Sherlock, Alex Tanner, Zac Najacht, Mark Kuether  
Back row: Mike Randall, Chris Bauknecht, David Gay, Colin Kelly, Bob Larson  
Absent: Martin Shafer, Chris Lepley



*Juneau - AK02 (NTN, MDN)  
Photo credit: M. Lukey*

# January 2023

SUNDAY	MONDAY	TUESDAY	WEDNESDAY	THURSDAY	FRIDAY	SATURDAY
1 <b>New Year's Day</b>	2 New Year's Day Observed (NADP Closed)	3 NTN change-out MDN change-out AMoN change-out	4	5	6	7
8	9	10 NTN change-out MDN change-out	11	12	13	14
15	16 <b>Martin Luther King Jr Day</b> (NADP Closed)	17 NTN change-out MDN change-out AMoN change-out	18	19	20	21
22	23	24 NTN change-out MDN change-out	25	26	27	28
29	30	31 NTN change-out MDN change-out AMoN change-out	<b>Site Support:</b> 800-952-7353 <b>Precipitation Data Submission:</b> <a href="mailto:nadp-precip@slh.wisc.edu">nadp-precip@slh.wisc.edu</a> <b>View Precipitation Data:</b> <a href="http://nadp.slh.wisc.edu/precip">http://nadp.slh.wisc.edu/precip</a>			



*Tudor Hill - BM01 (NTN)  
Photo credit: A. Peters*





# February 2023

SUNDAY	MONDAY	TUESDAY	WEDNESDAY	THURSDAY	FRIDAY	SATURDAY
<p><b>Site Support:</b> 1-800-952-7353  <b>Precipitation Data Submission:</b> <a href="mailto:nadp-precip@slh.wisc.edu">nadp-precip@slh.wisc.edu</a>  <b>View Precipitation Data:</b> <a href="http://nadp.slh.wisc.edu/precip">http://nadp.slh.wisc.edu/precip</a></p>			1	2 Groundhog Day	3	4
5	6	7 NTN change-out MDN change-out	8	9	10	11
12	13	14 Valentine's Day NTN change-out MDN change-out AMoN change-out	15	16	17	18
19	20 Presidents' Day	21 NTN change-out MDN change-out	22	23	24	25
26	27	28 NTN change-out MDN change-out AMoN change-out				



*Tanbark Flat - CA42 (NTN, MDN)  
Photo credit: EEMS Inc.*

# March 2023

SUNDAY	MONDAY	TUESDAY	WEDNESDAY	THURSDAY	FRIDAY	SATURDAY
<b>Site Support:</b> 1-800-952-7353 <b>Precipitation Data Submission:</b> <a href="mailto:nadp-precip@slh.wisc.edu">nadp-precip@slh.wisc.edu</a> <b>View Precipitation Data:</b> <a href="http://nadp.slh.wisc.edu/precip">http://nadp.slh.wisc.edu/precip</a>			1	2	3	4
5	6	7 NTN change-out MDN change-out	8	9	10	11
12 Daylight Saving (Start)	13	14 NTN change-out MDN change-out AMoN change-out	15	16	17 St. Patrick's Day	18
19	20	21 NTN change-out MDN change-out	22	23	24	25
26	27	28 NTN change-out MDN change-out AMoN change-out	29	30	31	



Mayhill - NM08 (NTN)  
Photo credit: EEMS Inc.

# April 2023

SUNDAY	MONDAY	TUESDAY	WEDNESDAY	THURSDAY	FRIDAY	SATURDAY
<p><b>Site Support:</b> 1-800-952-7353  <b>Precipitation Data Submission:</b> <a href="mailto:nadp-precip@slh.wisc.edu">nadp-precip@slh.wisc.edu</a>  <b>View Precipitation Data:</b> <a href="http://nadp.slh.wisc.edu/precip">http://nadp.slh.wisc.edu/precip</a></p>						<p>1 April Fool's Day</p>
2	3	<p>4  NTN change-out MDN change-out</p>	5	6	<p>7 Good Friday</p>	8
<p>9 Easter</p>	10	<p>11  NTN change-out MDN change-out AMoN change-out</p>	12	13	14	15
16	17	<p>18  NTN change-out MDN change-out</p>	19	20	21	<p>22 Earth Day</p>
<p>23  30</p>	24	<p>25  NTN change-out MDN change-out AMoN change-out</p>	26	27	28	29



NADP Spring Meeting - May 1-5, 2023, Madison, WI  
<https://nadp.slh.wisc.edu/spring2023/>



# May 2023

SUNDAY	MONDAY	TUESDAY	WEDNESDAY	THURSDAY	FRIDAY	SATURDAY
	1	2 NTN change-out MDN change-out	3	4	5 Cinco de Mayo	6
7	8	9 NTN change-out MDN change-out AMoN change-out	10	11	12	13
14 Mother's Day	15	16 NTN change-out MDN change-out	17	18	19	20
21	22	23 NTN change-out MDN change-out AMoN change-out	24	25	26	27
28	29 <b>Memorial Day</b> (NADP Closed)	30 NTN change-out MDN change-out	31	<b>Site Support:</b> 800-952-7353 <b>Precipitation Data Submission:</b> <a href="mailto:nadp-precip@slh.wisc.edu">nadp-precip@slh.wisc.edu</a> <b>View Precipitation Data:</b> <a href="http://nadp.slh.wisc.edu/precip">http://nadp.slh.wisc.edu/precip</a>		



*Stilwell - OK99 (MDN)  
Photo credit: EEMS Inc.*



# June 2023

SUNDAY	MONDAY	TUESDAY	WEDNESDAY	THURSDAY	FRIDAY	SATURDAY
<b>Site Support:</b> 1-800-952-7353 <b>Precipitation Data Submission:</b> <a href="mailto:nadp-precip@slh.wisc.edu">nadp-precip@slh.wisc.edu</a> <b>View Precipitation Data:</b> <a href="http://nadp.slh.wisc.edu/precip">http://nadp.slh.wisc.edu/precip</a>				1	2	3
4	5	6 NTN change-out MDN change-out AMoN change-out	7	8	9	10
11	12	13 NTN change-out MDN change-out	14 Flag Day	15	16	17
18 Father's Day	19 Juneteenth	20 NTN change-out MDN change-out AMoN change-out	21	22	23	24
25	26	27 NTN change-out MDN change-out	28	29	30	



*Seney National Wildlife Refuge-Headquarters – MI48 (NTN, MDN)  
Photo credit: EEMS Inc.*

# July 2023

SUNDAY

MONDAY

TUESDAY

WEDNESDAY

THURSDAY

FRIDAY

SATURDAY

<p><b>Site Support:</b> 1-800-952-7353  <b>Precipitation Data Submission:</b> <a href="mailto:nadp-precip@slh.wisc.edu">nadp-precip@slh.wisc.edu</a>  <b>View Precipitation Data:</b> <a href="http://nadp.slh.wisc.edu/precip">http://nadp.slh.wisc.edu/precip</a></p>						<p>1 Canada Day</p>
2	3	<p>4 <b>Independence Day</b> (NADP Closed) NTN change-out MDN change-out AMoN change-out</p>	5	6	7	8
9	10	<p>11 NTN change-out MDN change-out</p>	12	13	14	15
16	17	<p>18 NTN change-out MDN change-out AMoN change-out</p>	19	20	21	22
23	24	<p>25 NTN change-out MDN change-out</p>	26	27	28	29
30	31					



*Spooner - WI37 (NTN)  
Photo credit: EEMS Inc.*

# August 2023

SUNDAY	MONDAY	TUESDAY	WEDNESDAY	THURSDAY	FRIDAY	SATURDAY
		1 NTN change-out MDN change-out AMoN change-out	2	3	4	5
6	7	8 NTN change-out MDN change-out	9	10	11	12
13	14	15 NTN change-out MDN change-out AMoN change-out	16	17	18	19
20	21	22 NTN change-out MDN change-out	23	24	25	26
27	28	29 NTN change-out MDN change-out AMoN change-out	30	31	Site Support: 800-952-7353 Precipitation Data Submission: nadp-precip@slh.wisc.edu View Precipitation Data: <a href="http://nadp.slh.wisc.edu/precip">http://nadp.slh.wisc.edu/precip</a>	



*Pinedale - WY06 (NTN, MDN)  
Photo credit: A. Mclean*

# September 2023

SUNDAY

MONDAY

TUESDAY

WEDNESDAY

THURSDAY

FRIDAY

SATURDAY

<p><b>Site Support:</b> 800-952-7353  <b>Precipitation Data Submission:</b> <a href="mailto:nadp-precip@slh.wisc.edu">nadp-precip@slh.wisc.edu</a>  <b>View Precipitation Data:</b> <a href="http://nadp.slh.wisc.edu/precip">http://nadp.slh.wisc.edu/precip</a></p>						1	2
3	4 <b>Labor Day</b> (NADP Closed)	5 NTN change-out MDN change-out	6	7	8	9	
10	11	12 NTN change-out MDN change-out AMoN change-out	13	14	15	16	
17	18	19 NTN change-out MDN change-out	20	21	22 Native American Day	23	
24	25	26 NTN change-out MDN change-out AMoN change-out	27	28	29	30	



*Sequoia National Park-Giant Forest – CA75 (NTN, MDN)  
Photo credit: EEMS Inc.*



# October 2023

SUNDAY	MONDAY	TUESDAY	WEDNESDAY	THURSDAY	FRIDAY	SATURDAY
1	2	3 NTN change-out MDN change-out	4	5	6	7
8	9 Thanksgiving (Canada)	10 NTN change-out MDN change-out AMoN change-out	11	12	13	14
15	16	17 NTN change-out MDN change-out	18	19	20	21
22	23	24 NTN change-out MDN change-out AMoN change-out	25	26	27	28
29	30	31 Halloween NTN change-out MDN change-out	<b>Site Support:</b> 1-800-952-7353 <b>Precipitation Data Submission:</b> <a href="mailto:nadp-precip@slh.wisc.edu">nadp-precip@slh.wisc.edu</a> <b>View Precipitation Data:</b> <a href="http://nadp.slh.wisc.edu/precip">http://nadp.slh.wisc.edu/precip</a>			



*Craters of the Moon National Monument- ID03 (NTN)  
Photo credit: EEMS Inc.*

# November 2023

SUNDAY	MONDAY	TUESDAY	WEDNESDAY	THURSDAY	FRIDAY	SATURDAY
<p><b>Site Support:</b> 1-800-952-7353  <b>Precipitation Data Submission:</b> <a href="mailto:nadp-precip@slh.wisc.edu">nadp-precip@slh.wisc.edu</a>  <b>View Precipitation Data:</b> <a href="http://nadp.slh.wisc.edu/precip">http://nadp.slh.wisc.edu/precip</a></p>			1	2	3	4
5 Daylight Saving (End)	6	7  NTN change-out MDN change-out AMoN change-out	8	9	10	11 Veterans Day
12	13	14  NTN change-out MDN change-out	15	16	17	18
19	20	21  NTN change-out MDN change-out AMoN change-out	22	23 Thanksgiving (NADP Closed)	24	25
26	27	28  NTN change-out MDN change-out	29	30		



*Great Basin National Park-Lehman Caves- NV05 (NTN)  
Photo credit: EEMS Inc.*

# December 2023

SUNDAY	MONDAY	TUESDAY	WEDNESDAY	THURSDAY	FRIDAY	SATURDAY
<b>Site Support:</b> 1-800-952-7353 <b>Precipitation Data Submission:</b> <a href="mailto:nadp-precip@slh.wisc.edu">nadp-precip@slh.wisc.edu</a> <b>View Precipitation Data:</b> <a href="http://nadp.slh.wisc.edu/precip">http://nadp.slh.wisc.edu/precip</a>					1	2
3	4	5 NTN change-out MDN change-out AMoN change-out	6	7	8	9
10	11	12 NTN change-out MDN change-out	13	14	15	16
17	18	19 NTN change-out MDN change-out AMoN change-out	20	21	22	23
24 Christmas Eve 31 New Year's Eve	25 Christmas Day (NADP Closed)	26 NTN change-out MDN change-out	27	28	29	30

# 2024 Calendar

## JANUARY

S	M	T	W	T	F	S
	1	2	3	4	5	6
7	8	9	10	11	12	13
14	15	16	17	18	19	20
21	22	23	24	25	26	27
28	29	30	31			

## FEBRUARY

S	M	T	W	T	F	S
				1	2	3
4	5	6	7	8	9	10
11	12	13	14	15	16	17
18	19	20	21	22	23	24
25	26	27	28	29		

## MARCH

S	M	T	W	T	F	S
					1	2
3	4	5	6	7	8	9
10	11	12	13	14	15	16
17	18	19	20	21	22	23
24	25	26	27	28	29	30
						31

## APRIL

S	M	T	W	T	F	S
	1	2	3	4	5	6
7	8	9	10	11	12	13
14	15	16	17	18	19	20
21	22	23	24	25	26	27
28	29	30				

## MAY

S	M	T	W	T	F	S
			1	2	3	4
5	6	7	8	9	10	11
12	13	14	15	16	17	18
19	20	21	22	23	24	25
26	27	28	29	30	31	

## JUNE

S	M	T	W	T	F	S
						1
2	3	4	5	6	7	8
9	10	11	12	13	14	15
16	17	18	19	20	21	22
23	24	25	26	27	28	29
						30

## JULY

S	M	T	W	T	F	S
	1	2	3	4	5	6
7	8	9	10	11	12	13
14	15	16	17	18	19	20
21	22	23	24	25	26	27
28	29	30	31			

## AUGUST

S	M	T	W	T	F	S
				1	2	3
4	5	6	7	8	9	10
11	12	13	14	15	16	17
18	19	20	21	22	23	24
25	26	27	28	29	30	31

## SEPTEMBER

S	M	T	W	T	F	S
1	2	3	4	5	6	7
8	9	10	11	12	13	14
15	16	17	18	19	20	21
22	23	24	25	26	27	28
29	30					

## OCTOBER

S	M	T	W	T	F	S
		1	2	3	4	5
6	7	8	9	10	11	12
13	14	15	16	17	18	19
20	21	22	23	24	25	26
27	28	29	30	31		

## NOVEMBER

S	M	T	W	T	F	S
					1	2
3	4	5	6	7	8	9
10	11	12	13	14	15	16
17	18	19	20	21	22	23
24	25	26	27	28	29	30

## DECEMBER

S	M	T	W	T	F	S
1	2	3	4	5	6	7
8	9	10	11	12	13	14
15	16	17	18	19	20	21
22	23	24	25	26	27	28
29	30	31				

# Contact Information

## NADP Program Office (PO)

**Jamie Schauer**

Principal Investigator  
wslhdirector@slh.wisc.edu  
608-890-1569

**David Gay**

Coordinator  
Dgay2@wisc.edu  
608-263-9162

**Richard Tanabe**

Site Liaison  
Richard.Tanabe@slh.wisc.edu  
608-263-9077  
800-952-7353 (toll-free)

**Mark Kuether**

Data Engineer  
Mark.Kuether@slh.wisc.edu  
608-265-4834

NADP Program Office  
Wisconsin State Laboratory of Hygiene  
465 Henry Mall  
Madison, Wisconsin 53706

## NADP Analytical Laboratory

**Amy Mager**

NADP Laboratory Director  
Amy.Mager@slh.wisc.edu  
608-224-6215

**Katie Blaydes**

Chemist Supervisor  
Katie.Blaydes@slh.wisc.edu

**Martin Shafer**

System Quality Assurance Manager  
mmshafer@wisc.edu  
608-224-3799

**Nichole Miller**

NADP Laboratory Quality Assurance Specialist  
Nichole.Miller@slh.wisc.edu

NADP Analytical Laboratory  
Wisconsin State Laboratory of Hygiene  
2601 Agriculture Drive  
Madison, Wisconsin 53718

NADP Sample and Supply Receiving  
Wisconsin State Laboratory of Hygiene  
465 Henry Mall  
Madison, Wisconsin 53706

**Christa Dahman**

Chemist Supervisor  
Christa.Dahman@slh.wisc.edu

**Cover Photo:** WY06 – Pinedale (NTN/MDN/AMoN)  
**Photo credit:** Alex Mclean (USFS)



The NADP is located at the Wisconsin State Laboratory of Hygiene, a unit of the University of Wisconsin-Madison. For more information, contact: NADP Program Office, Wisconsin State Laboratory of Hygiene, 465 Henry Mall, University of Wisconsin-Madison, Madison, Wisconsin 53706. E-mail: [nadp@slh.wisc.edu](mailto:nadp@slh.wisc.edu), or visit <http://nadp.slh.wisc.edu>.

