



National Atmospheric Deposition Program

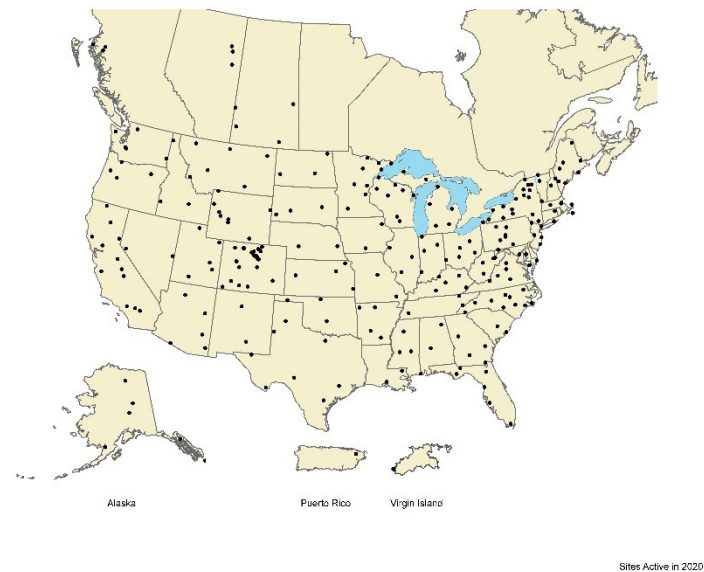
**2022 Calendar**

# Network Maps

## Mercury Deposition Network (MDN)



## National Trends Network (NTN)



## Atmospheric Mercury Network (AMNet)

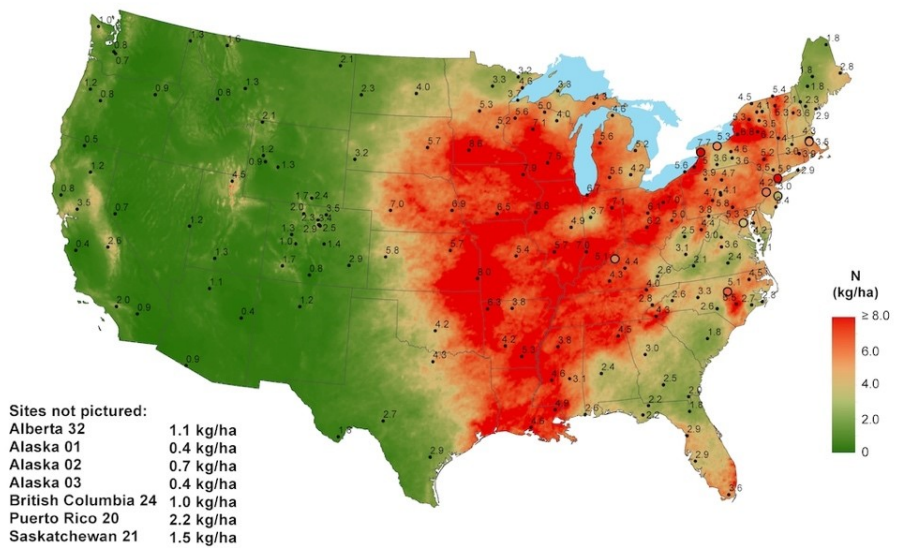


## Ammonia Monitoring Network (AMoN)

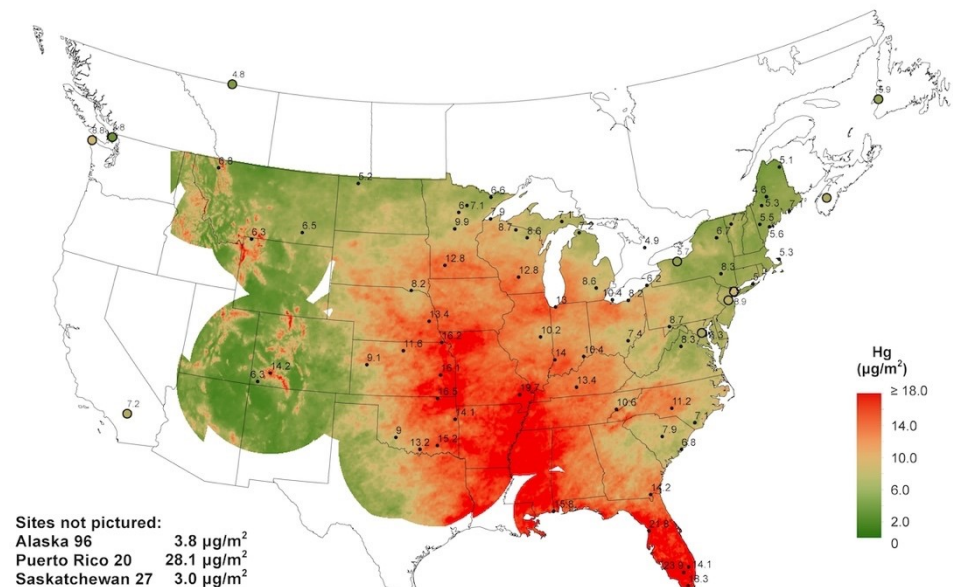


# NADP Summary

The National Atmospheric Deposition Program (NADP) is a Cooperative Research Support Program of the State Agricultural Experiment Stations (NRSP-3), housed at the Wisconsin State Laboratory of Hygiene at the University of Wisconsin-Madison, and is based on collaborative efforts between many different groups interested in atmospheric deposition of pollutants and their effects on different environments. It is structured as a cooperative program that represents coordinated efforts of many individuals in federal, state, tribal and local governmental agencies, educational institutions, private companies, and non-governmental agencies to operate monitoring sites and report data. The NADP provides free and easy access to all of its precipitation data, including seasonal and annual averages, trend plots, deposition maps, reports, manuals, and educational brochures. The annual map summary is the principal product of the NADP. It summarizes the results of network operation for the most recent complete calendar year in graphic form. Examples from the 2020 annual summary are shown below. Copies of the 2020 Annual Summary are available from the Program Office, requests can be made to [nadp@slh.wisc.edu](mailto:nadp@slh.wisc.edu).



2020 Inorganic nitrogen wet deposition from nitrate and ammonium



2020 Total Mercury Wet Deposition

The NADP Program Office is located at the Wisconsin State Laboratory of Hygiene, a unit of the University of Wisconsin-Madison. For more information, contact: NADP Program Office, Wisconsin State Laboratory of Hygiene, 465 Henry Mall, Madison, Wisconsin 53706; E-mail: [nadp@slh.wisc.edu](mailto:nadp@slh.wisc.edu); or visit <http://nadp.slh.wisc.edu>.



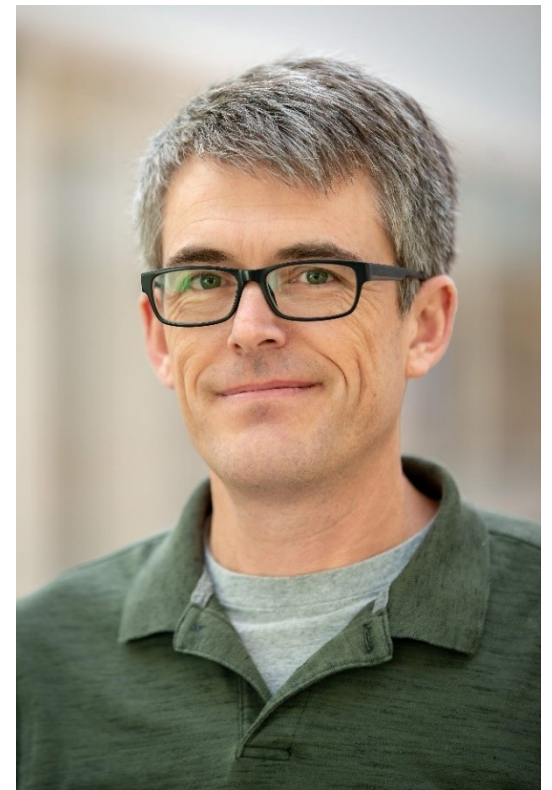
## Notes from the Chair

In the face of COVID-19 and of all the challenges it has brought to the National Atmospheric Deposition Program and community, the past year has been difficult. The hard work of the Program Office, site operators, and Wisconsin State Laboratory of Hygiene to keep the networks operating smoothly has been outstanding. As we enter 2022, some of these challenges will persist and perhaps new ones will arise. As it has been for more than four decades the Program will adapt and continue to generate the highest quality data to advance the science of atmospheric chemistry and deposition, track trends in atmospheric composition, respond to emerging environmental issues, and support decision makers in their efforts to protect human and ecosystem health. Every member of the NADP community, from site operator to committee member to data user, contributes to the success and growth of NADP and your commitment is very much appreciated.


Looking toward the future, expanding the NADP National Trends Network, mercury, and ammonia networks will continue to be Program priorities. As with all environmental monitoring these days, adequately funding these networks will be challenging. Opportunities for collaboration among NADP and other monitoring programs to enhance network sustainability will be explored. Additionally, NADP will pursue opportunities to venture into new types of measurements, expanding on current monitoring infrastructure and the capabilities of the Wisconsin State Laboratory of Hygiene. Even as we emerge from COVID-19, the next year will continue to be challenging. It will also be a time of exciting opportunity for NADP. On behalf of the Program, I enthusiastically look forward to your participation.

John T. Walker, USEPA

Chair of the Executive Committee



# NADP Staff



**Marie Assem**  
Chemist



**Katie Blaydes**  
Senior Chemist



**Abby Carr**  
Associate Chemist



**Christa Dahman**  
TECL Supervisor




**Camille Danielson**  
Laboratory QA Manager



**Nichole Davis**  
Chemist



**David Gay**  
Program Coordinator



**Dana Grabowski**  
Assistant Data Manager




**Colin Kelly**  
Environmental Lab Technician




**Bob Larson**  
Information and Database Manager



**Nate Lepak**  
Finance Specialist




**Amy Mager**  
Sample & Data Processing Manager



**Zac Najacht**  
Assistant Data Manager



**Martin Shafer**  
Systems QA Manager



**Wyatt Sherlock**  
Instrumentation Specialist



**Richard Tanabe**  
Site Liaison



**Kirsten Widmayer**  
Chemist



**Chris Worley**  
Laboratory Manager



*Joshua Tree National Park - Black Rock - CA67 (NTN, AMoN)  
Photo credit: EEMS Inc.*

# January 2022

SUNDAY

MONDAY

TUESDAY

WEDNESDAY

THURSDAY

FRIDAY

SATURDAY

<p><b>Site Support:</b> NADP Site Liaison - 800-952-7353  <b>Precipitation Data Submission:</b> <a href="mailto:nadp-precip@slh.wisc.edu">nadp-precip@slh.wisc.edu</a>  <b>View Precipitation Data:</b> <a href="http://nadp.slh.wisc.edu/precip">http://nadp.slh.wisc.edu/precip</a>  <b>Did you know?</b> The CAL/HAL can now recycle sampling and plastic bags, return with your used supplies.</p>						<p><b>1</b>  <b>New Year's Day</b></p>
2	3	<p>4</p> <p>NTN change-out  MDN change-out  AMoN change-out</p>	5	6	7	8
9	10	<p>11</p> <p>NTN change-out  MDN change-out</p>	12	13	14	15
16	<p><b>17</b>  <b>Martin Luther King Jr. Day</b>  (CAL/HAL Closed)</p>	<p>18</p> <p>NTN change-out  MDN change-out  AMoN change-out</p>	19	20	21	22
23	24	<p>25</p> <p>NTN change-out  MDN change-out</p>	26	27	28	29
30	31					



*Lewiston - Peanut Belt Research Station - NC03 (NTN)  
Photo Credit: A.Leggett*



# February 2022

SUNDAY	MONDAY	TUESDAY	WEDNESDAY	THURSDAY	FRIDAY	SATURDAY
		1  NTN change-out MDN change-out AMoN change-out	2	3	4	5
6	7	8  NTN change-out MDN change-out	9	10	11	12
13	14 Valentine's Day	15  NTN change-out MDN change-out AMoN change-out	16	17	18	19
20	21 President's Day	22  NTN change-out MDN change-out	23	24	25	26
27	28	<b>Site Support:</b> NADP Site Liaison - 800-952-7353 <b>Precipitation Data Submission:</b> <a href="mailto:nadp-precip@slh.wisc.edu">nadp-precip@slh.wisc.edu</a> <b>View Precipitation Data:</b> <a href="http://nadp.slh.wisc.edu/precip">http://nadp.slh.wisc.edu/precip</a> <b>Did you know?</b> In 2020, the labs processed over 12,000 NTN samples, over 3,000 AMoN samples and over 4,000 MDN samples!				



*NADP Operator Recognition Award 2021 – Francis “Hoss” Parks MD15  
Photo credit: Michael Synder (<https://www.michaelosynder.com/erodingedges>)*

# March 2022

SUNDAY	MONDAY	TUESDAY	WEDNESDAY	THURSDAY	FRIDAY	SATURDAY
<b>Site Support:</b> NADP Site Liaison - 800-952-7353 <b>Did you know?</b> 2021 was the inaugural year for the Operator Recognition Award?		1 NTN change-out MDN change-out AMoN change-out	2	3	4	5
6	7	8 NTN change-out MDN change-out	9	10	11	12
13 Daylight Saving Time Starts	14	15 NTN change-out MDN change-out AMoN change-out	16	17 St. Patrick's Day	18	19
20 First Day of Spring	21	22 NTN change-out MDN change-out	23	24	25	26
27	28	29 NTN change-out MDN change-out AMoN change-out	30	31	<b>Precipitation Data Submission:</b> nadp-precip@slh.wisc.edu  <b>View Precipitation Data:</b> <a href="http://nadp.slh.wisc.edu/precip">http://nadp.slh.wisc.edu/precip</a>	



*Lake Scott State Park – KS32 (NTN/MDN)  
Photo Credit: EEMS Inc.*

# April 2022

SUNDAY	MONDAY	TUESDAY	WEDNESDAY	THURSDAY	FRIDAY	SATURDAY
<p><b>Site Support:</b> NADP Site Liaison - 800-952-7353  <b>Precipitation Data Submission:</b> <a href="mailto:nadp-precip@slh.wisc.edu">nadp-precip@slh.wisc.edu</a>  <b>View Precipitation Data:</b> <a href="http://nadp.slh.wisc.edu/precip">http://nadp.slh.wisc.edu/precip</a>  <b>Did you know?</b> NADP has updated their website, visit <a href="http://nadp.slh.wisc.edu">http://nadp.slh.wisc.edu</a></p>					1	2
3	4	5 NTN change-out MDN change-out	6	7	8	9
10	11	12 NTN change-out MDN change-out AMoN change-out	13	14	15 Good Friday	16
17 Easter	18	19 NTN change-out MDN change-out	20	21	22 Earth Day	23
24	25	26 NTN change-out MDN change-out AMoN change-out	27	28	29	30



*Yellowstone National Park – Tower Falls – WY08 (NTN/MDN)  
Photo Credit: EEMS Inc.*

# May 2022

SUNDAY	MONDAY	TUESDAY	WEDNESDAY	THURSDAY	FRIDAY	SATURDAY
1	2	3 NTN change-out MDN change-out	4	5	6	7
8 Mother's Day	9	10 NTN change-out MDN change-out AMoN change-out	11	12	13	14
15	16	17 NTN change-out MDN change-out	18	19	20	21
22	23	24 NTN change-out MDN change-out AMoN change-out	25	26	27	28
29	<b>30</b> <b>Memorial Day</b> (CAL/HAL Closed)	31 NTN change-out MDN change-out	<p><b>Site Support:</b> NADP Site Liaison - 800-952-7353  <b>Precipitation Data Submission:</b> <a href="mailto:nadp-precip@slh.wisc.edu">nadp-precip@slh.wisc.edu</a>  <b>View Precipitation Data:</b> <a href="http://nadp.slh.wisc.edu/precip">http://nadp.slh.wisc.edu/precip</a>  <b>Did you know?</b> The NADP supported 217 journal and report publications during the 2020 calendar year.</p>			



*Snowball*



*Keith & Mick*



*Tukka*



*Luna & Braxton*



*Pancake & Trixie*

## Pets of NADP



*Millie*



*Captain*



*Diggy*



*Jasmine*



*Iggy*



*Honey*



*Beaker*



# June 2022

SUNDAY	MONDAY	TUESDAY	WEDNESDAY	THURSDAY	FRIDAY	SATURDAY
<p><b>Site Support:</b> NADP Site Liaison - 800-952-7353  <b>Precipitation Data Submission:</b> <a href="mailto:nadp-precip@slh.wisc.edu">nadp-precip@slh.wisc.edu</a>  <b>View Precipitation Data:</b> <a href="http://nadp.slh.wisc.edu/precip">http://nadp.slh.wisc.edu/precip</a></p>			1	2	3	4
5	6	7 <p>NTN change-out  MDN change-out  AMoN change-out</p>	8	9	10	11
12	13	14 <p>Flag Day    NTN change-out  MDN change-out</p>	15	16	17	18
19 <p>Father's Day</p>	20	21 <p>First Day of Summer    NTN change-out  MDN change-out  AMoN change-out</p>	22	23	24	25
26	27	28 <p>NTN change-out  MDN change-out</p>	29	30		



*Sonora - TX16 (NTN)  
Photo Credit: EEMS Inc.*

# July 2022

SUNDAY	MONDAY	TUESDAY	WEDNESDAY	THURSDAY	FRIDAY	SATURDAY
<p><b>Site Support:</b> NADP Site Liaison - 800-952-7353  <b>Precipitation Data Submission:</b> <a href="mailto:nadp-precip@slh.wisc.edu">nadp-precip@slh.wisc.edu</a>  <b>View Precipitation Data:</b> <a href="http://nadp.slh.wisc.edu/precip">http://nadp.slh.wisc.edu/precip</a>  <b>Did you know?</b> You can follow us on Facebook @NationalAtmosphericDepositionProgram</p>					1 Canada Day	2
3	4 <b>Independence Day</b> (HAL/CAL Closed)	5  NTN change-out MDN change-out AMoN change-out	6	7	8	9
10	11	12  NTN change-out MDN change-out	13	14	15	16
17	18	19  NTN change-out MDN change-out AMoN change-out	20	21	22	23
24  31	25	26  NTN change-out MDN change-out	27	28	29	30



*Everglades – South Palm Beach County – FL95 (MDN)  
Photo Credit: EEMS Inc., Inset: South Florida Water Management District NADP Staff*

# August 2022

SUNDAY	MONDAY	TUESDAY	WEDNESDAY	THURSDAY	FRIDAY	SATURDAY
	1	2 NTN change-out MDN change-out AMoN change-out	3	4	5	6
7	8	9 NTN change-out MDN change-out	10	11	12	13
14	15	16 NTN change-out MDN change-out AMoN change-out	17	18	19	20
21	22	23 NTN change-out MDN change-out	24	25	26	27
28	29	30 NTN change-out MDN change-out AMoN change-out	31	<b>Site Support:</b> NADP Site Liaison - 800-952-7353 <b>Precipitation Data Submission:</b> <a href="mailto:nadp-precip@slh.wisc.edu">nadp-precip@slh.wisc.edu</a> <b>View Precipitation Data:</b> <a href="http://nadp.slh.wisc.edu/precip">http://nadp.slh.wisc.edu/precip</a>		



*Sand Spring - CO15 (NTN)  
Photo Credit: EEMS Inc., Inset: E. Scherff*

# September 2022

SUNDAY

MONDAY

TUESDAY

WEDNESDAY

THURSDAY

FRIDAY

SATURDAY

<p><b>Site Support:</b> NADP Site Liaison - 800-952-7353  <b>Precipitation Data Submission:</b> <a href="mailto:nadp-precip@slh.wisc.edu">nadp-precip@slh.wisc.edu</a>  <b>View Precipitation Data:</b> <a href="http://nadp.slh.wisc.edu/precip">http://nadp.slh.wisc.edu/precip</a>  <b>Did you know?</b> You can submit photos for the 2023 calendar to <a href="mailto:nadp@slh.wisc.edu">nadp@slh.wisc.edu</a></p>					1	2	3
4	<p><b>5</b>  <b>Labor Day</b>  (HAL/CAL Closed)</p>	<p>6</p> <p>NTN change-out  MDN change-out</p>	7	8	9	10	
11	12	<p>13</p> <p>NTN change-out  MDN change-out  AMoN change-out</p>	14	15	16	17	
18	19	<p>20</p> <p>NTN change-out  MDN change-out</p>	21	<p>22</p> <p>First Day of Autumn</p>	23	24	
25	26	<p>27</p> <p>NTN change-out  MDN change-out  AMoN change-out</p>	28	29	30		



*Acadia National Park-McFarland Hill - ME98 (NTN/MDN)  
Photo Credit: EEMS Inc.*



# October 2022

SUNDAY	MONDAY	TUESDAY	WEDNESDAY	THURSDAY	FRIDAY	SATURDAY
<p><b>Site Support:</b> NADP Site Liaison - 800-952-7353  <b>Precipitation Data Submission:</b> <a href="mailto:nadp-precip@slh.wisc.edu">nadp-precip@slh.wisc.edu</a>  <b>View Precipitation Data:</b> <a href="http://nadp.slh.wisc.edu/precip">http://nadp.slh.wisc.edu/precip</a>  <b>Did you know?</b> That white filter paper in the AMoN shipping bags is filter paper that is cut, coated with citric acid and placed in the bags to reduce ammonia exposure in transit.</p>						1
2	3	4 NTN change-out MDN change-out	5	6	7	8
9	10 Columbus Day Indigenous Peoples' Day  Thanksgiving (Canada)	11 NTN change-out MDN change-out AMoN change-out	12	13	14	15
16	17	18 NTN change-out MDN change-out	19	20	21	22
23 30	24 31 Halloween	25 NTN change-out MDN change-out AMoN change-out	26	27	28	29



*Bandelier National Monument- NM07 (NTN)  
Photo Credit: EEMS Inc.*

# November 2022

SUNDAY	MONDAY	TUESDAY	WEDNESDAY	THURSDAY	FRIDAY	SATURDAY
		1 NTN change-out MDN change-out	2	3	4	5
6 Daylight Saving Ends	7	8 NTN change-out MDN change-out AMoN change-out	9	10	11 Veterans Day	12
13	14	15 NTN change-out MDN change-out	16	17	18	19
20	21	22 NTN change-out MDN change-out AMoN change-out	23	24 <b>Thanksgiving</b> (CAL/HAL Closed)	25	26
27	28	29	30	<b>Site Support:</b> NADP Site Liaison - 800-952-7353 <b>Precipitation Data Submission:</b> <a href="mailto:nadp-precip@slh.wisc.edu">nadp-precip@slh.wisc.edu</a> <b>View Precipitation Data:</b> <a href="http://nadp.slh.wisc.edu/precip">http://nadp.slh.wisc.edu/precip</a> <b>Did you know?</b> You can follow us on Twitter @NADProgram		



*Henry Mall Holiday Abominable Bucket Person*



*Molas Pass Holiday Operators (C096)*



*AMoN Holiday Ornaments*

# December 2022

SUNDAY	MONDAY	TUESDAY	WEDNESDAY	THURSDAY	FRIDAY	SATURDAY
<p><b>Site Support:</b> NADP Site Liaison - 800-952-7353  <b>Precipitation Data Submission:</b> <a href="mailto:nadp-precip@slh.wisc.edu">nadp-precip@slh.wisc.edu</a>  <b>View Precipitation Data:</b> <a href="http://nadp.slh.wisc.edu/precip">http://nadp.slh.wisc.edu/precip</a>  <b>Did you know?</b> The 2021 sampling year was the 44<sup>th</sup> sampling year for NTN, the 26<sup>th</sup> sampling year for MDN, the 13<sup>th</sup> sampling year for AMNet, and the 12<sup>th</sup> for AMoN.</p>				1	2	3
4	5	6 NTN change-out MDN change-out AMoN change-out	7	8	9	10
11	12	13 NTN change-out MDN change-out	14	15	16	17
18	19	20 NTN change-out MDN change-out AMoN change-out	21 First Day of Winter	22	23	24 Christmas Eve
25 Christmas Day	26	27 NTN change-out MDN change-out	28	29	30	31 New Year's Eve

# 2023 Calendar

## JANUARY

S	M	T	W	T	F	S
1	2	3	4	5	6	7
8	9	10	11	12	13	14
15	16	17	18	19	20	21
22	23	24	25	26	27	28
29	30	31				

## FEBRUARY

S	M	T	W	T	F	S
			1	2	3	4
5	6	7	8	9	10	11
12	13	14	15	16	17	18
19	20	21	22	23	24	25
26	27	28				

## MARCH

S	M	T	W	T	F	S
			1	2	3	4
5	6	7	8	9	10	11
12	13	14	15	16	17	18
19	20	21	22	23	24	25
26	27	28	29	30	31	

## APRIL

S	M	T	W	T	F	S
						1
2	3	4	5	6	7	8
9	10	11	12	13	14	15
16	17	18	19	20	21	22
23	24	25	26	27	28	29
30						

## MAY

S	M	T	W	T	F	S
	1	2	3	4	5	6
7	8	9	10	11	12	13
14	15	16	17	18	19	20
21	22	23	24	25	26	27
28	29	30	31			

## JUNE

S	M	T	W	T	F	S
				1	2	3
4	5	6	7	8	9	10
11	12	13	14	15	16	17
18	19	20	21	22	23	24
25	26	27	28	29	30	

## JULY

S	M	T	W	T	F	S
						1
2	3	4	5	6	7	8
9	10	11	12	13	14	15
16	17	18	19	20	21	22
23	24	25	26	27	28	29
30	31					

## AUGUST

S	M	T	W	T	F	S
		1	2	3	4	5
6	7	8	9	10	11	12
13	14	15	16	17	18	19
20	21	22	23	24	25	26
27	28	29	30	31		

## SEPTEMBER

S	M	T	W	T	F	S
					1	2
3	4	5	6	7	8	9
10	11	12	13	14	15	16
17	18	19	20	21	22	23
24	25	26	27	28	29	30

## OCTOBER

S	M	T	W	T	F	S
1	2	3	4	5	6	7
8	9	10	11	12	13	14
15	16	17	18	19	20	21
22	23	24	25	26	27	28
29	30	31				

## NOVEMBER

S	M	T	W	T	F	S
			1	2	3	4
5	6	7	8	9	10	11
12	13	14	15	16	17	18
19	20	21	22	23	24	25
26	27	28	29	30		

## DECEMBER

S	M	T	W	T	F	S
					1	2
3	4	5	6	7	8	9
10	11	12	13	14	15	16
17	18	19	20	21	22	23
24	25	26	27	28	29	30
31						

# Contact Information

## NADP Program Office (PO)

### Jamie Schauer

Principal Investigator  
wslhdirector@slh.wisc.edu  
608-890-1569

### David Gay

Coordinator  
David.Gay@slh.wisc.edu  
608-263-9162

### Richard Tanabe

Site Liaison  
Richard.Tanabe@slh.wisc.edu  
608-263-9077  
800-952-7353 (toll-free)

### Bob Larson

Information & Database Manager  
Robert.Larson@slh.wisc.edu  
608-263-9176

### Jan Klawitter

Public Affairs Manager  
Jan.Klawitter@slh.wisc.edu  
608-265-2529

## Central Analytical Laboratory (CAL) and Mercury Analytical Laboratory (HAL)

### Chris Worley

CAL Laboratory Manager  
Chris.Worley@slh.wisc.edu  
608-224-4334

HAL Laboratory Manager  
mdn@slh.wisc.edu

### Martin Shafer

Special Projects Coordinator and System Quality Assurance Manager  
Martin.Shafer@slh.wisc.edu  
608-224-3799

### Camille Danielson

NADP Quality Assurance Manager  
Camille.Danielson@slh.wisc.edu  
608-224-4333

### Amy Mager

NADP Sample and Data Processing Manager  
Amy.Mager@slh.wisc.edu  
608-224-6215

## Mailing Addresses

NADP Program Office  
Wisconsin State Laboratory of Hygiene  
465 Henry Mall  
Madison, Wisconsin 53706

Central Analytical Laboratory or Mercury Analytical Laboratory  
Wisconsin State Laboratory of Hygiene  
2601 Agriculture Drive  
Madison, Wisconsin 53718

NADP Sample and Supply Receiving  
Wisconsin State Laboratory of Hygiene  
465 Henry Mall  
Madison, Wisconsin 53706

**Cover Photo:** Lewiston - Peanut Belt Research Station – NC03  
**Photo credit:** A.Leggett, NC Department of Agriculture & Consumer Services



The NADP Program Office is located at the Wisconsin State Laboratory of Hygiene, a unit of the University of Wisconsin-Madison. For more information, contact: NADP Program Office, Wisconsin State Laboratory of Hygiene, 465 Henry Mall, University of Wisconsin-Madison, Madison, Wisconsin 53706.

E-mail: [nadp@slh.wisc.edu](mailto:nadp@slh.wisc.edu), or visit <http://nadp.slh.wisc.edu>.

