



National Atmospheric Deposition Program

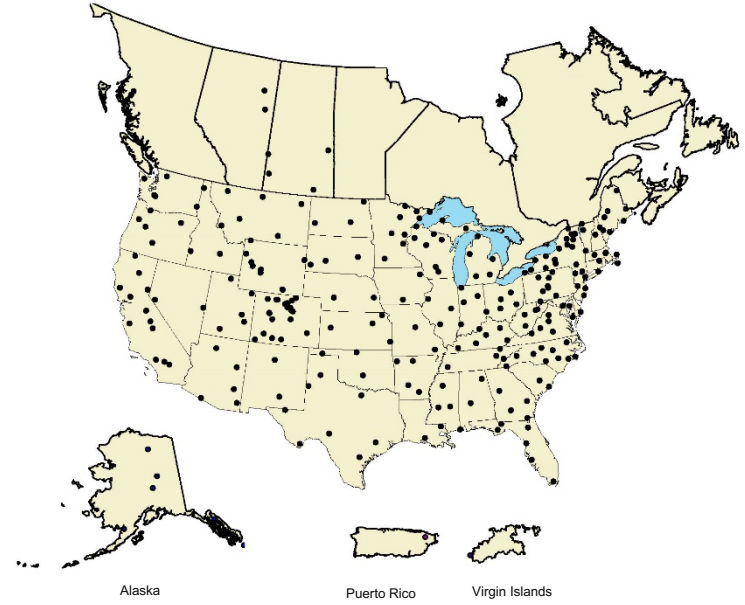
2021 Calendar

Network Maps

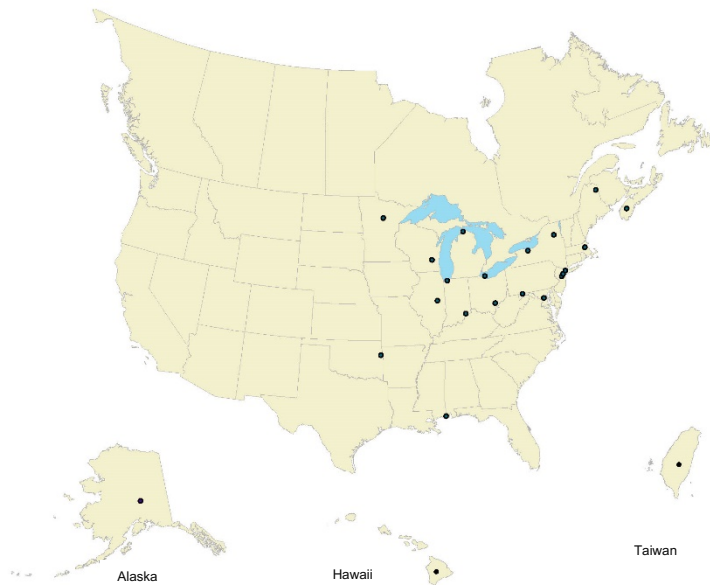
Mercury Deposition Network (MDN)



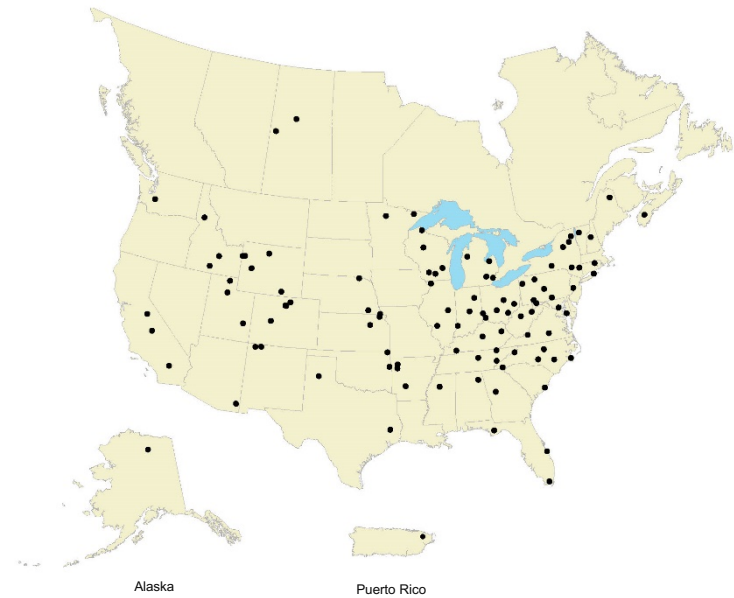
National Trends Network (NTN)



Atmospheric Mercury Network (AMNet)

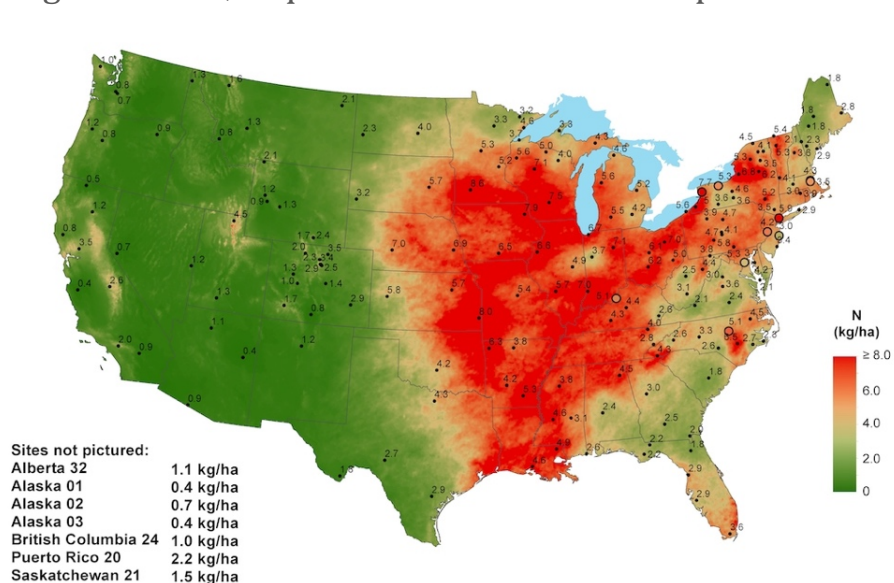


Ammonia Monitoring Network (AMoN)

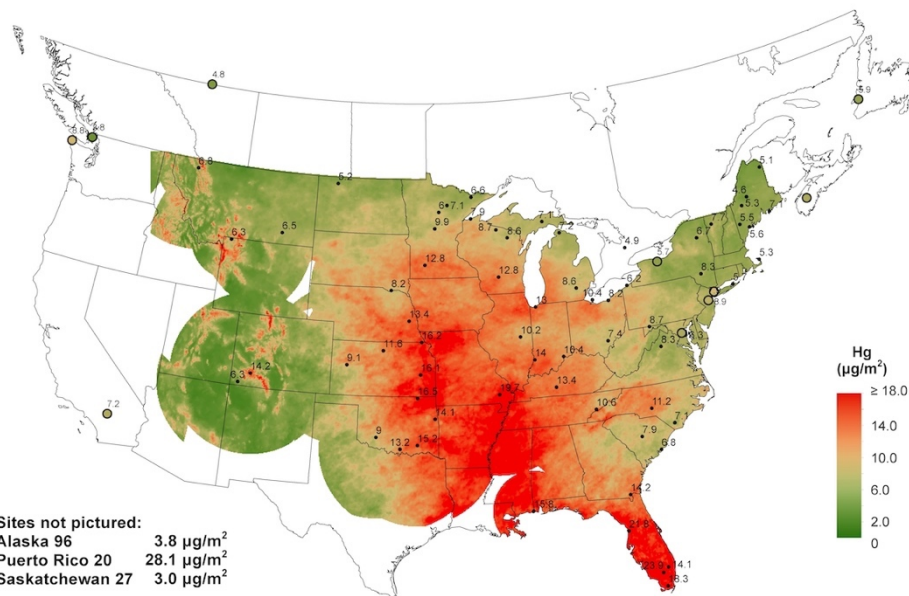


NADP Summary

The National Atmospheric Deposition Program (NADP) is a Cooperative Research Support Program of the State Agricultural Experiment Stations (NRSP-3), housed at the Wisconsin State Laboratory of Hygiene at the University of Wisconsin-Madison, and is based on collaborative efforts between many different groups interested in atmospheric deposition of pollutants and their effects on different environments. It is structured as a cooperative program that represents coordinated efforts of many individuals in federal, state, tribal and local governmental agencies, educational institutions, private companies, and non-governmental agencies to operate monitoring sites and report data. The NADP provides free and easy access to all of its precipitation data, including seasonal and annual averages, trend plots, deposition maps, reports, manuals, and educational brochures. The annual map summary is the principal product of the NADP. It summarizes the results of network operation for the most recent complete calendar year in graphic form. Examples from the 2019 annual summary are shown below. Copies of the 2019 Annual Summary are available from the Program Office, requests can be made to nadp@slh.wisc.edu.



2019 Inorganic nitrogen wet deposition from nitrate and ammonium



2019 Total Mercury Wet Deposition

The NADP Program Office is located at the Wisconsin State Laboratory of Hygiene, a unit of the University of Wisconsin-Madison. For more information, contact: NADP Program Office, Wisconsin State Laboratory of Hygiene, 465 Henry Mall, Madison, Wisconsin 53706; E-mail: nadp@slh.wisc.edu; or visit <http://nadp.slh.wisc.edu>.



Notes from the Chair

The NADP site operators make the organization one of the most successful and important environmental monitoring programs in the world. For over four decades, the NADP has provided high-quality data because every Tuesday morning, more than 300 dedicated site operators endure the challenges of keeping electronic instruments running and switching out sampling apparatuses in extreme weather conditions, sometimes after perilous travels into their sites. The dedication of NADP site operators is reciprocated by the Program Office, Central Analytical Laboratory, and Mercury Analytical Laboratory staff at the Wisconsin State Laboratory of Hygiene. All of this important work is funded by a wide array of collaborating agencies, nations, institutions, and companies who care about the interaction of the atmosphere, hydrosphere, and lithosphere on this Earth, our island home. You are a part of this important organization. It's something much bigger than any single agency, research project, or scientist. What will you do to keep it going?

The history of the NADP is not without adversity, but we've persevered. We have withstood the Merchants of Doubt, who did not want to believe in acid rain and who equate our changing climate to mythology (Oreskes & Conway, 2011). Over the past four decades, we have overcome losses of dear colleagues and long-time collaborators, budget cuts, shutdowns, theft, vandalism, wildfires, and severe storms of every kind, and we're still collecting data - five times more than when we started. Now we face the invisible and formidable threat of COVID-19. This will be a year of adaptation, digging deep, and planning for future operations. So, on behalf of the NADP, thank you for what you do to keep it going.

Stay healthy!

Gregory A. Wetherbee, USGS

Chair of the Executive Committee



C084 - Betasso



Yosemite NP - Half Dome

NADP Staff

Zoom Meeting

Recording 29:51 View

 <p>Mark Olson</p>	 <p>David Gay</p>	 <p>Bob Larson</p>	 <p>Richard Tanabe</p>	 <p>Martin Shafer</p>
 <p>Chris Worley</p>	 <p>Amy Mager</p>	 <p>Camille Danielson</p>	 <p>Christa Dahman</p>	 <p>Katie Blaydes</p>
 <p>Zac Najacht</p>	 <p>Dana Grabowski</p>	 <p>Jesse Wouters</p>	 <p>Kirsten Widmayer</p>	 <p>Nichole Davis</p>
 <p>Marie Assem</p>	 <p>Erin Pierce</p>	 <p>Nathaniel Javid</p>	 <p>Na Zhang</p>	 <p>Margaret Johnson</p>
 <p>Chris Lepley</p>	 <p>Jimmy Sustachek</p>	 <p>Eric Uram</p>	 <p>Colin Kelly</p>	 <p>Nate Lepak</p>

Mute Stop Video Participants 5 Chat Share Screen Record Reactions Leave



*Pinedale - WY06 (NTN, AMoN)
Photo credit: T. Porwoll*

January 2021

SUNDAY	MONDAY	TUESDAY	WEDNESDAY	THURSDAY	FRIDAY	SATURDAY
Site Support: NADP Site Liaison - 800-952-7353 Precipitation Data Submission: nadp-precip@slh.wisc.edu or http://nadp.slh.wisc.edu/upload/ppt View Precipitation Data: http://nadp.slh.wisc.edu/precip					1 New Year's Day (HAL/CAL Closed)	2
3	4	5 NTN change-out MDN change-out AMoN change-out	6	7	8	9
10	11	12 NTN change-out MDN change-out	13	14	15	16
17	18 Martin Luther King Jr. Day (CAL/HAL Closed)	19 NTN change-out MDN change-out AMoN change-out	20	21	22	23
24	25	26 NTN change-out MDN change-out	27	28	29	30
31						



*Sunlight Peak - CO92 (NTN)
Photo Credit: P. Nyland*



Photo Credit: EEMS Inc.

February 2021

SUNDAY	MONDAY	TUESDAY	WEDNESDAY	THURSDAY	FRIDAY	SATURDAY
	1	2 NTN change-out MDN change-out AMoN change-out	3	4	5	6
7	8	9 NTN change-out MDN change-out	10	11	12	13
14 Valentine's Day	15 President's Day	16 NTN change-out MDN change-out AMoN change-out	17	18	19	20
21	22	23 NTN change-out MDN change-out	24	25	26	27
28	<p>Site Support: NADP Site Liaison - 800-952-7353 Precipitation Data Submission: nadp-precip@slh.wisc.edu or http://nadp.slh.wisc.edu/upload/ppt View Precipitation Data: http://nadp.slh.wisc.edu/precip</p>					

PRECIPITATION CHEMISTRY SITE
Before modifying this site, or in case of problems
with equipment or procedures
contact the NADP Program Office
at (800) 952-7353



*Rocky Mountain National Park-Beaver Meadows- C019 (NTN)
Photo credit: J. Bromberg*

March 2021

SUNDAY	MONDAY	TUESDAY	WEDNESDAY	THURSDAY	FRIDAY	SATURDAY
	1	2 NTN change-out MDN change-out AMoN change-out	3	4	5	6
7	8	9 NTN change-out MDN change-out	10	11	12	13
14 Daylight Saving Time Starts	15	16 NTN change-out MDN change-out AMoN change-out	17 St. Patrick's Day	18	19	20 First Day of Spring
21	22	23 NTN change-out MDN change-out	24	25	26	27
28	29	30 NTN change-out MDN change-out AMoN change-out	31			

NADP Virtual Spring Meeting

For more information: <http://nadp.slh.wisc.edu>



National Atmospheric
Deposition Program



*Henry Mall, UW-Madison Campus (PO)
Photo credit: R.Tanabe*

April 2021

SUNDAY	MONDAY	TUESDAY	WEDNESDAY	THURSDAY	FRIDAY	SATURDAY
Site Support: NADP Site Liaison - 800-952-7353 Precipitation Data Submission: nadp-precip@slh.wisc.edu or http://nadp.slh.wisc.edu/upload/ppt View Precipitation Data: http://nadp.slh.wisc.edu/precip				1	2	3
4 Easter	5	6 NTN change-out MDN change-out	7	8	9	10
11	12	13 NTN change-out MDN change-out AMoN change-out	14	15	16	17
18	19	20 NTN change-out MDN change-out	21	22 Earth Day	23	24
25	26	27 NTN change-out MDN change-out AMoN change-out	28	29	30	



*Smith Island - MD15 (NTN)
Photo credit: F. "Hoss" Parks*

May 2021

SUNDAY	MONDAY	TUESDAY	WEDNESDAY	THURSDAY	FRIDAY	SATURDAY
<p>Site Support: NADP Site Liaison - 800-952-7353 Precipitation Data Submission: nadp-precip@slh.wisc.edu or http://nadp.slh.wisc.edu/upload/ppt View Precipitation Data: http://nadp.slh.wisc.edu/precip</p>						1
2	3	4 NTN change-out MDN change-out AMoN change-out	5	6	7	8
9 Mother's Day	10	11 NTN change-out MDN change-out	12	13	14	15
16	17	18 NTN change-out MDN change-out AMoN change-out	19	20	21	22
23	24	25 NTN change-out MDN change-out	26	27	28	29
30	31 Memorial Day (HAL./CAL. Closed)					



*Eagle Heights – UW Madison – WI93
Photo Credit: M. Olson*

June 2021

SUNDAY	MONDAY	TUESDAY	WEDNESDAY	THURSDAY	FRIDAY	SATURDAY
		1 NTN change-out MDN change-out AMoN change-out	2	3	4	5
6	7	8 NTN change-out MDN change-out	9	10	11	12
13	14 Flag Day	15 NTN change-out MDN change-out AMoN change-out	16	17	18	19
20 Father's Day	21 First Day of Summer	22 NTN change-out MDN change-out	23	24	25	26
27	28	29	30	Site Support: NADP Site Liaison - 800-952-7353 Precipitation Data Submission: nadp-precip@slh.wisc.edu or http://nadp.slh.wisc.edu/upload/ppt View Precipitation Data: http://nadp.slh.wisc.edu/precip		



*Wichita Mountains NWR - OK06 (MDN)
Photo Credit: G. Crider*

July 2021

SUNDAY	MONDAY	TUESDAY	WEDNESDAY	THURSDAY	FRIDAY	SATURDAY
Site Support: NADP Site Liaison - 800-952-7353 Precipitation Data Submission: nadp-precip@slh.wisc.edu or http://nadp.slh.wisc.edu/upload/ppt View Precipitation Data: http://nadp.slh.wisc.edu/precip				1 Canada Day	2	3
4 Independence Day	5	6 NTN change-out MDN change-out	7	8	9	10
11	12	13 NTN change-out MDN change-out AMoN change-out	14	15	16	17
18	19	20 NTN change-out MDN change-out	21	22	23	24
25	26	27 NTN change-out MDN change-out AMoN change-out	28	29	30	31



*Petrified Forest National Park-Rainbow Forest - AZ97 (NTN)
Photo Credit: EEMS Inc.*

August 2021

SUNDAY	MONDAY	TUESDAY	WEDNESDAY	THURSDAY	FRIDAY	SATURDAY
1	2	3 NTN change-out MDN change-out	4	5	6	7
8	9	10 NTN change-out MDN change-out AMoN change-out	11	12	13	14
15	16	17 NTN change-out MDN change-out	18	19	20	21
22	23	24 NTN change-out MDN change-out AMoN change-out	25	26	27	28
29	30	31				



*Beeville - TX03 (NTN)
Photo Credit: C. Serna*

September 2021

SUNDAY	MONDAY	TUESDAY	WEDNESDAY	THURSDAY	FRIDAY	SATURDAY
<p>Site Support: NADP Site Liaison - 800-952-7353 Precipitation Data Submission: nadp-precip@slh.wisc.edu or http://nadp.slh.wisc.edu/upload/ppt View Precipitation Data: http://nadp.slh.wisc.edu/precip</p>			1	2	3	4
5	<p>6 Labor Day (CAL/HAL Closed)</p>	<p>7 NTN change-out MDN change-out</p>	8	9	10	11
12	13	<p>14 NTN change-out MDN change-out AMoN change-out</p>	15	16	17	18
19	20	<p>21 NTN change-out MDN change-out</p>	<p>22 First Day of Autumn</p>	23	24	25
26	27	<p>28 NTN change-out MDN change-out AMoN change-out</p>	29	30		



*Buffalo Pass - Summit Lake - C097 (NTN, MDN) to right of smoke plume
and Dry Lake - C093 (NTN) down the hill a ways.
Photo Credit: N. Bencke*

October 2021

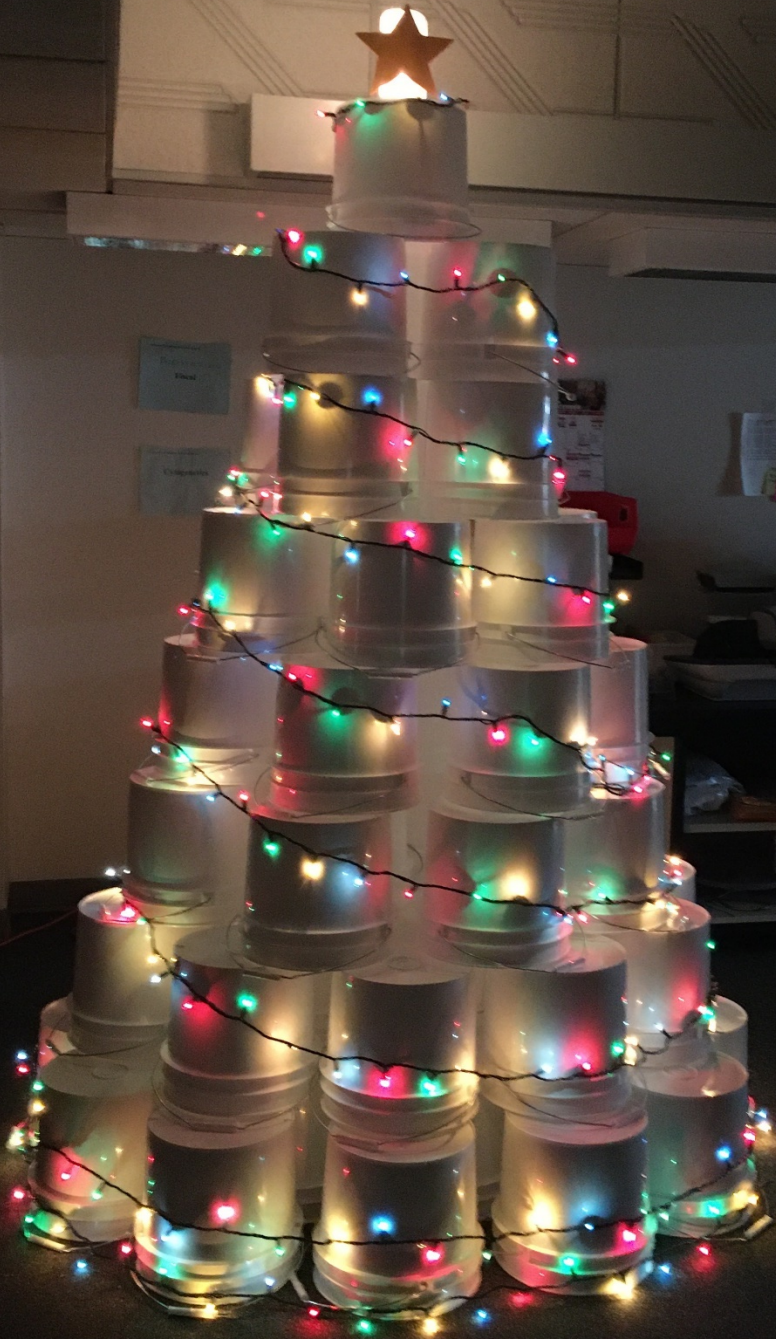
SUNDAY	MONDAY	TUESDAY	WEDNESDAY	THURSDAY	FRIDAY	SATURDAY
Site Support: NADP Site Liaison - 800-952-7353 Precipitation Data Submission: nadp-precip@slh.wisc.edu or http://nadp.slh.wisc.edu/upload/ppt View Precipitation Data: http://nadp.slh.wisc.edu/precip					1	2
3	4	5 NTN change-out MDN change-out	6	7	8	9
10	11 Columbus Day Thanksgiving (Canada)	12 NTN change-out MDN change-out AMoN change-out	13	14	15	16
17	18	19 NTN change-out MDN change-out	20	21	22	23
24 31 Halloween	25	26 NTN change-out MDN change-out AMoN change-out	27	28	29	30



*Betasso - C084 (NTN)
Photo Credit: R. Tanabe*

November 2021

SUNDAY	MONDAY	TUESDAY	WEDNESDAY	THURSDAY	FRIDAY	SATURDAY
	1	2 NTN change-out MDN change-out	3	4	5	6
7 Daylight Saving Time Ends	8	9 NTN change-out MDN change-out AMoN change-out	10	11 Veterans Day	12	13
14	15	16 NTN change-out MDN change-out	17	18	19	20
21	22	23 NTN change-out MDN change-out AMoN change-out	24	25 Thanksgiving (CAL/HAL Closed)	26	27
28	29	30 NTN change-out MDN change-out				



Henry Mall Holiday Bucket Tree



NADP Christmas Sweaters



2019 NADP Fall Meeting, Boulder, CO

December 2021

SUNDAY	MONDAY	TUESDAY	WEDNESDAY	THURSDAY	FRIDAY	SATURDAY
<p>Site Support: NADP Site Liaison - 800-952-7353 Precipitation Data Submission: nadp-precip@slh.wisc.edu or http://nadp.slh.wisc.edu/upload/ppt View Precipitation Data: http://nadp.slh.wisc.edu/precip</p>			1	2	3	4
5	6	7 NTN change-out MDN change-out	8	9	10	11
12	13	14 NTN change-out MDN change-out AMoN change-out	15	16	17	18
19	20	21 First Day of Winter NTN change-out MDN change-out	22	23	24 Christmas Eve (HAL/CAL Closed)	25 Christmas Day (HAL/CAL Closed)
26	27	28 NTN change-out MDN change-out AMoN change-out	29	30	31 New Year's Eve (HAL/CAL Closed)	

2022 Calendar

JANUARY

S	M	T	W	T	F	S
						1
2	3	4	5	6	7	8
9	10	11	12	13	14	15
16	17	18	19	20	21	22
23	24	25	26	27	28	29
30	31					

FEBRUARY

S	M	T	W	T	F	S
		1	2	3	4	5
6	7	8	9	10	11	12
13	14	15	16	17	18	19
20	21	22	23	24	25	26
27	28					

MARCH

S	M	T	W	T	F	S
		1	2	3	4	5
6	7	8	9	10	11	12
13	14	15	16	17	18	19
20	21	22	23	24	25	26
27	28	29	30	31		

APRIL

S	M	T	W	T	F	S
					1	2
3	4	5	6	7	8	9
10	11	12	13	14	15	16
17	18	19	20	21	22	23
24	25	26	27	28	29	30

MAY

S	M	T	W	T	F	S
1	2	3	4	5	6	7
8	9	10	11	12	13	14
15	16	17	18	19	20	21
22	23	24	25	26	27	28
29	30	31				

JUNE

S	M	T	W	T	F	S
			1	2	3	4
5	6	7	8	9	10	11
12	13	14	15	16	17	18
19	20	21	22	23	24	25
26	27	28	29	30		

JULY

S	M	T	W	T	F	S
					1	2
3	4	5	6	7	8	9
10	11	12	13	14	15	16
17	18	19	20	21	22	23
24	25	26	27	28	29	30
31						

AUGUST

S	M	T	W	T	F	S
	1	2	3	4	5	6
7	8	9	10	11	12	13
14	15	16	17	18	19	20
21	22	23	24	25	26	27
28	29	30	31			

SEPTEMBER

S	M	T	W	T	F	S
				1	2	3
4	5	6	7	8	9	10
11	12	13	14	15	16	17
18	19	20	21	22	23	24
25	26	27	28	29	30	

OCTOBER

S	M	T	W	T	F	S
						1
2	3	4	5	6	7	8
9	10	11	12	13	14	15
16	17	18	19	20	21	22
23	24	25	26	27	28	29
30	31					

NOVEMBER

S	M	T	W	T	F	S
		1	2	3	4	5
6	7	8	9	10	11	12
13	14	15	16	17	18	19
20	21	22	23	24	25	26
27	28	29	30			

DECEMBER

S	M	T	W	T	F	S
				1	2	3
4	5	6	7	8	9	10
11	12	13	14	15	16	17
18	19	20	21	22	23	24
25	26	27	28	29	30	31

Contact Information

NADP Program Office (PO)

Jamie Schauer

Principal Investigator
wslhdirector@slh.wisc.edu
608-890-1569

David Gay

Coordinator
David.Gay@slh.wisc.edu
608-263-9162

Mark Olson

Program Office and HAL Manager
Mark.Olson@slh.wisc.edu
608-263-9041

Richard Tanabe

Site Liaison
Richard.Tanabe@slh.wisc.edu
608-263-9077
800-952-7353 (toll-free)

Bob Larson

Information & Database Manager
Robert.Larson@slh.wisc.edu
608-263-9176

Jan Klawitter

Public Affairs Manager
Jan.Klawitter@slh.wisc.edu
608-265-2529

Central Analytical Laboratory (CAL) and Mercury Analytical Laboratory (HAL)

Chris Worley

CAL Laboratory Manager
Chris.Worley@slh.wisc.edu
608-224-4334

Martin Shafer

Special Projects Coordinator and System Quality Assurance Manager
Martin.Shafer@slh.wisc.edu
608-224-3799

Camille Danielson

NADP Quality Assurance Manager
Camille.Danielson@slh.wisc.edu
608-224-4333

Mark Olson

HAL Laboratory Manager
Mark.Olson@slh.wisc.edu
608-263-9041

Amy Mager

NADP Sample and Data Processing Manager
Amy.Mager@slh.wisc.edu
608-224-6215

Mailing Addresses

NADP Program Office
Wisconsin State Laboratory of Hygiene
465 Henry Mall
Madison, Wisconsin 53706

Central Analytical Laboratory or Mercury Analytical Laboratory
Wisconsin State Laboratory of Hygiene
2601 Agriculture Drive
Madison, Wisconsin 53718

NADP Sample and Supply Receiving
Wisconsin State Laboratory of Hygiene
465 Henry Mall
Madison, Wisconsin 53706

Cover Photo: Wichita Mountains NWR - OK06
Photo credit: G. Crider



The NADP Program Office is located at the Wisconsin State Laboratory of Hygiene, a unit of the University of Wisconsin-Madison. For more information, contact: NADP Program Office, Wisconsin State Laboratory of Hygiene, 465 Henry Mall, University of Wisconsin-Madison, Madison, Wisconsin 53706.

E-mail: nadp@slh.wisc.edu, or visit <http://nadp.slh.wisc.edu>.

